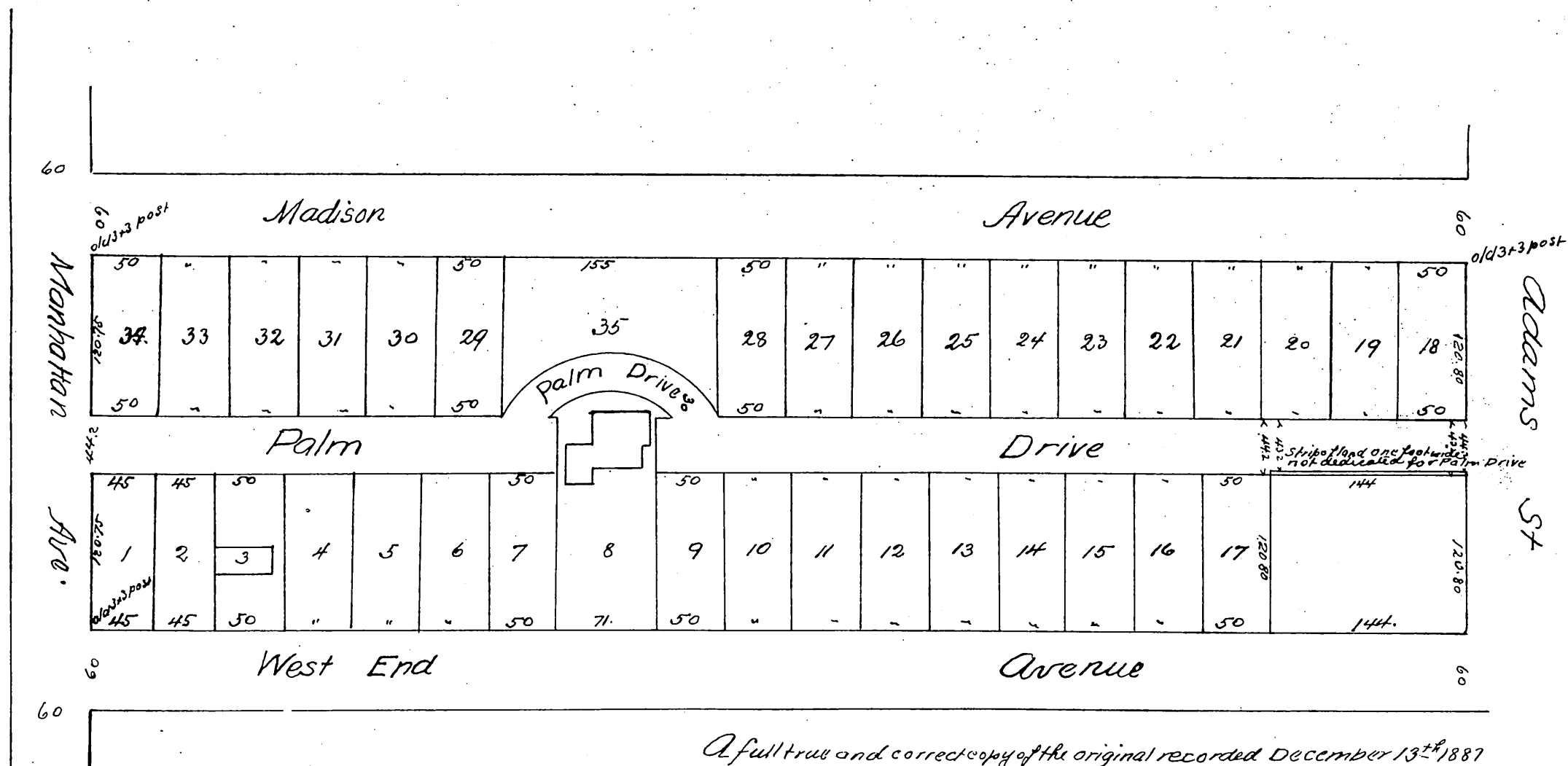


Map OF THE

W. G. Krutz Jr C. E. Mackey and W. F. Gill Subdivision
of a part of the
Longstreet Tract
Surveyed in Sept 1887 by J. H. Dockweiler

Scale 100 ft to one inch



A full true and correct copy of the original recorded December 13th 1887
at 3⁴³ P.M. at request of Mackey and Burnham
Frank A. Gibson, County Recorder
By H. E. Johnston, S. part.

