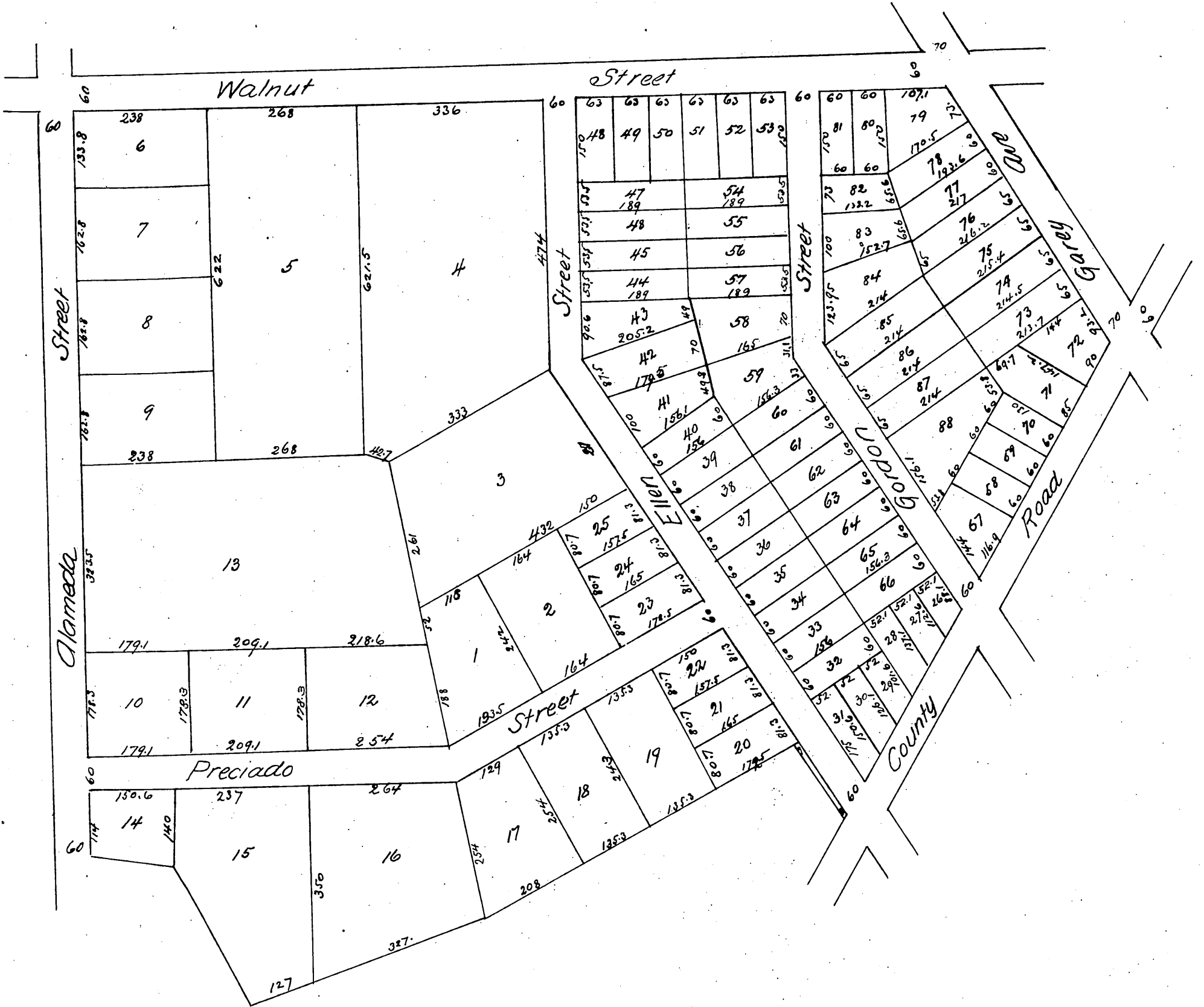


Map
 of the
 Pomona Land & Water Company's Resubdivision
 OF
 Block H in the Palomares Tract
 including the Preciado Homestead
 Pomona Cal.
 Surveyed Dec 1887
 Scale 100 ft to inch



A full true and correct copy of the original (reduced to an
 exact ^{one}/₁₂ size) recorded December 14th 1887 at 10³⁶ a.m. at
 request of Pomona Land and Water Co.
 Frank A. Gibson Co. Surveyor.
 by Wm. E. Johnston deputy.