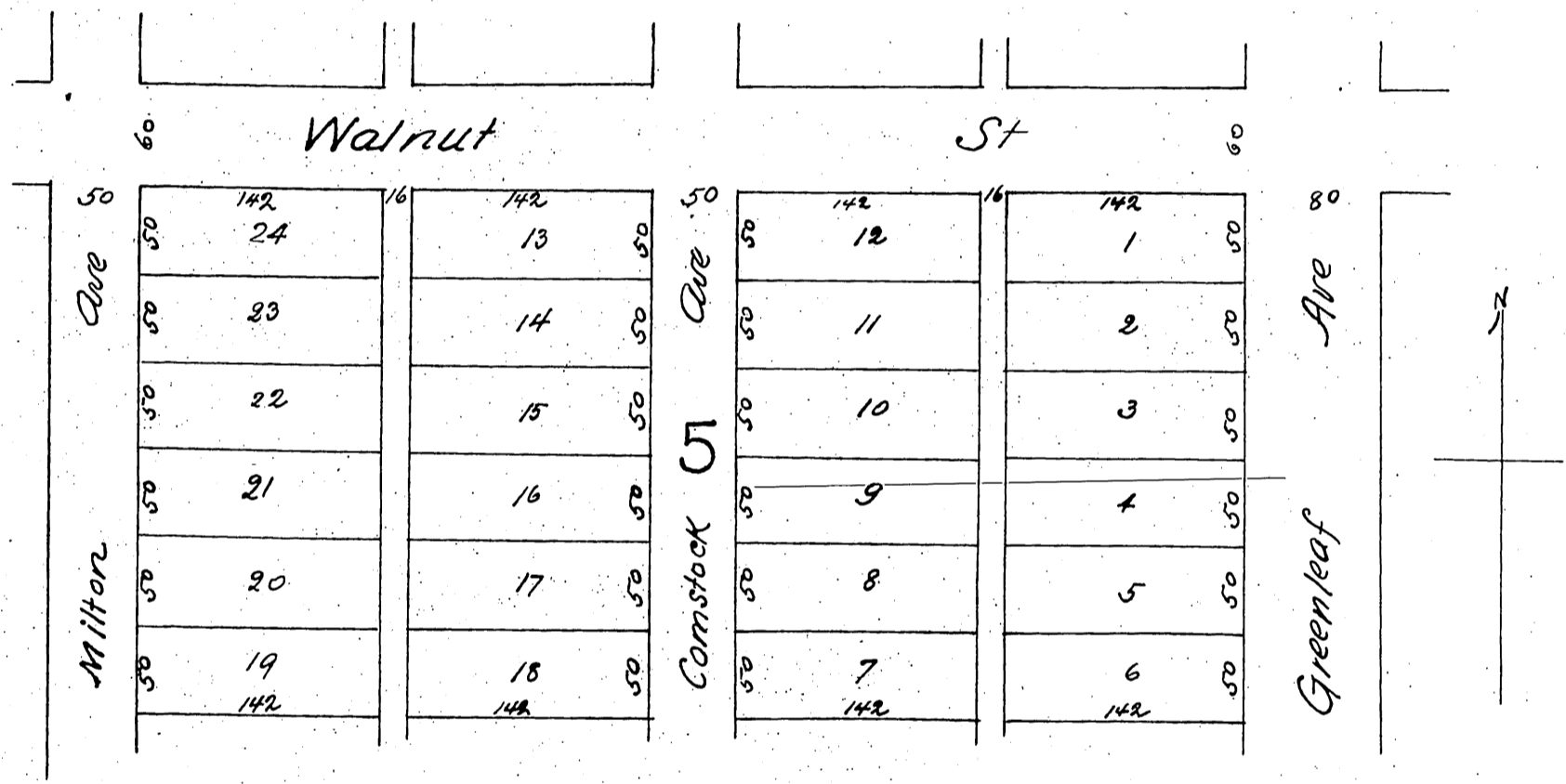


Neiswender & Slick's Subdivision

Whittier

Being a Subdivision of Lot 5 Block K
 of the Pickering Land and Water Company's Subdivision of the
 John M. Thomas Ranch
 Los Angeles County Cal
 Surveyed Nov 1887 by Jessup, Peece & Clappitt Surveyors
 Scale 70 feet to 1 inch



A full true and correct copy of the original (reduced to the scale of 100 feet to 1 inch) recorded December 14th 1887 at 3:49 P.M. at request of W. H. Neiswender
 Frank A. Gibson County Recorder
 by Wm E. Johnson Deputy