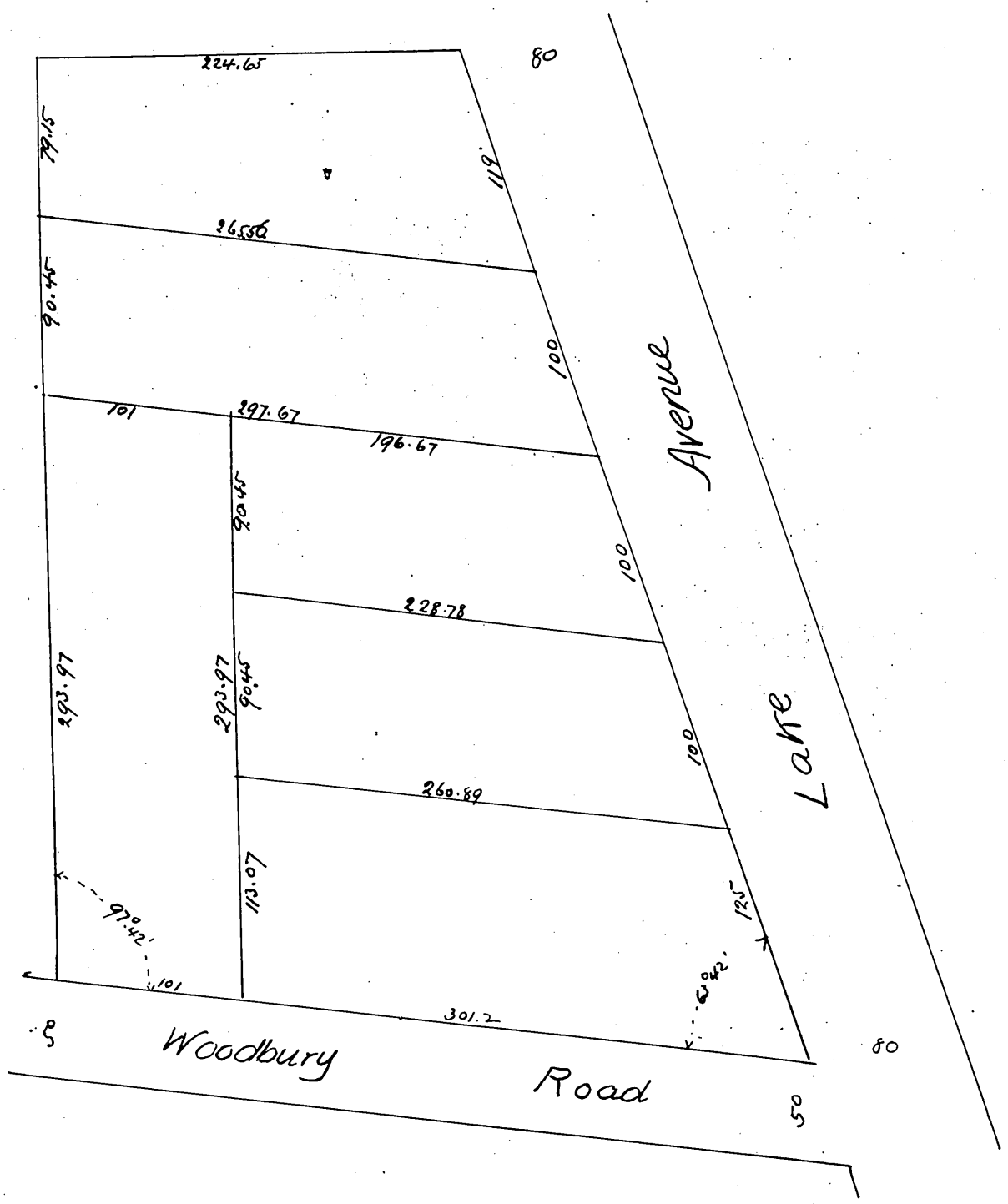


# Samuel P. Walker's Subdivision

of  
Lots 15-16-17 of Block 6 of Map 1  
of  
Altadena

Surveyed by Willard and Miller Dec 1887  
Scale 40 ft = 1 inch



A full true and correct copy of the original (reduced to an exact one half size) recorded December 15th 1887 at 9:15 AM at request of B.T. Smith  
 Frank A. Gibson Co Recorder  
 by Wm. L. Johnston Deputy