

W.B. Cullens Addition

"No 1"

to the Town of

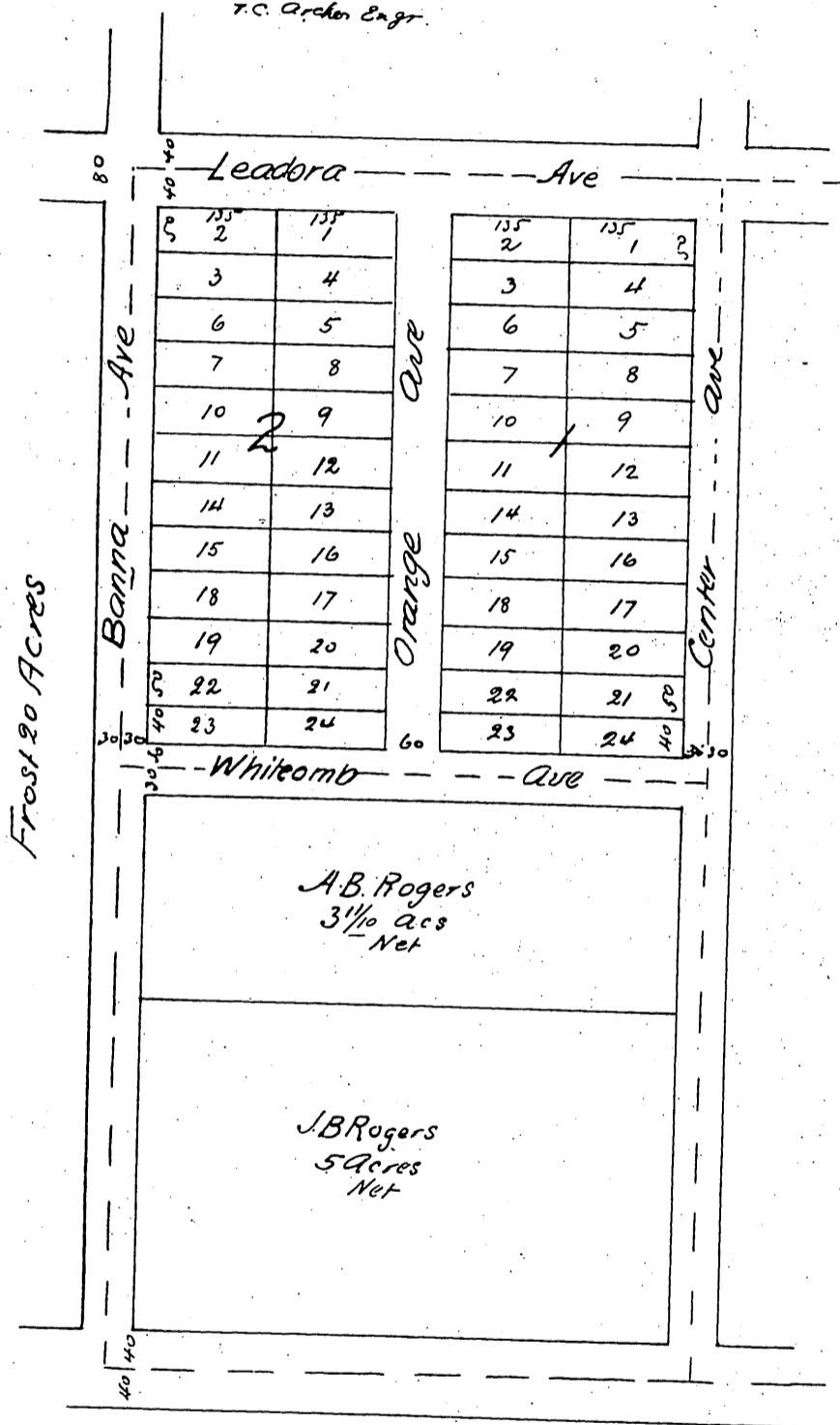
Glendora

Being the W 1/2 of the N. E 1/4 of the S. E 1/4 of Sec 30 T. 1 N. R. 9. W
S. B. M.

Los Angeles Co Cal

Scale 200 to one inch

T.C. Archer Engr.



A full, true and correct copy of the original recorded
December 17th 1887 at 11:52 A.M. at request of
W. B. Cullens.

Frank A. Fisher, County Recorder
By: [Signature] Deputy