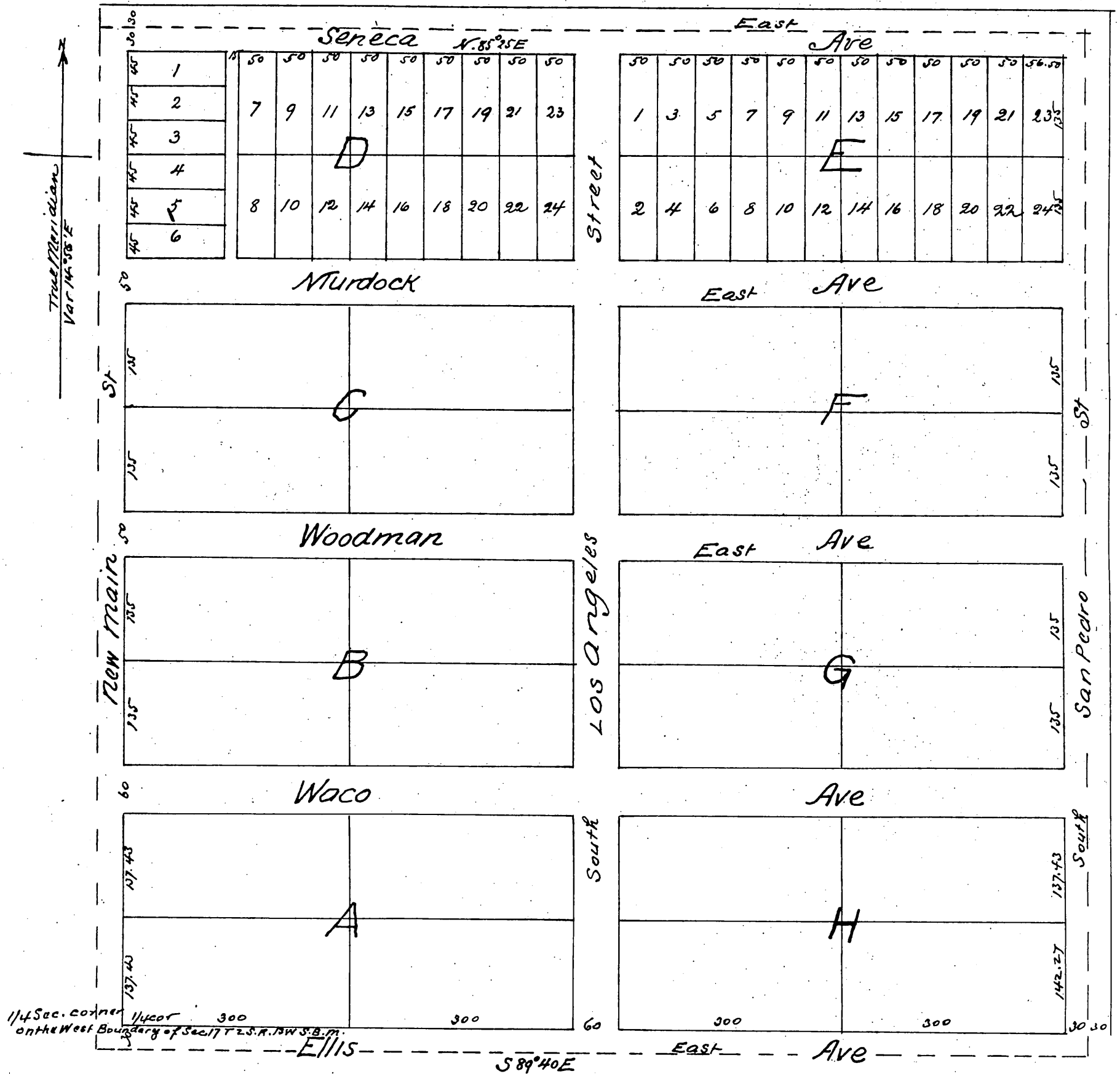


Map of the Eagle Tract

Being the S.W. 1/4 of the N.W. 1/4 of
Sec 17 T. 2 S. R. 13 W. S.B.M.
Containing 40 acres
in the
County of Los Angeles Cal.
John Goldsworthy Co Sur
Scale 100 ft to an inch

I hereby dedicate the streets as shown on this plat
John W. Eldridge
by R.W. Eldridge his Attorney in fact



A full true and correct copy of the original (reduced to the scale of 150 ft to the inch) recorded December 17th 1887 at 2:21 P.M. at request of R. W. Eldridge.
Frank A. Gibson County Recorder
By Mrs. E. Johnston, Deputy.