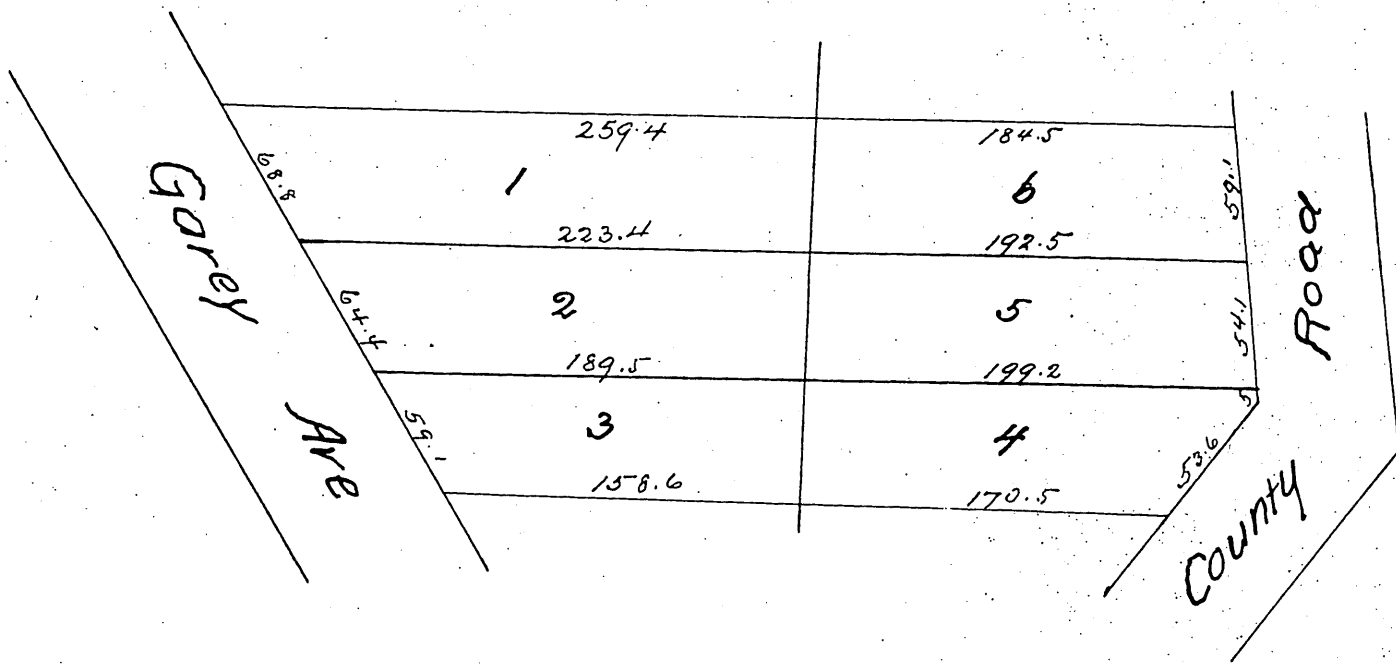


Map
of
M.C. Wellers Subdivision
of
Lot 5 Block A
Palomares Tract



A full true and correct copy of the original, (reduced to the scale of 80 ft to 1 inch) recorded December 21st 1887 at 11² A.M. at request of Pomona Land and Water Co

Frank A. Gibson Co. Recorder
by Wm S. Johnston Deputy