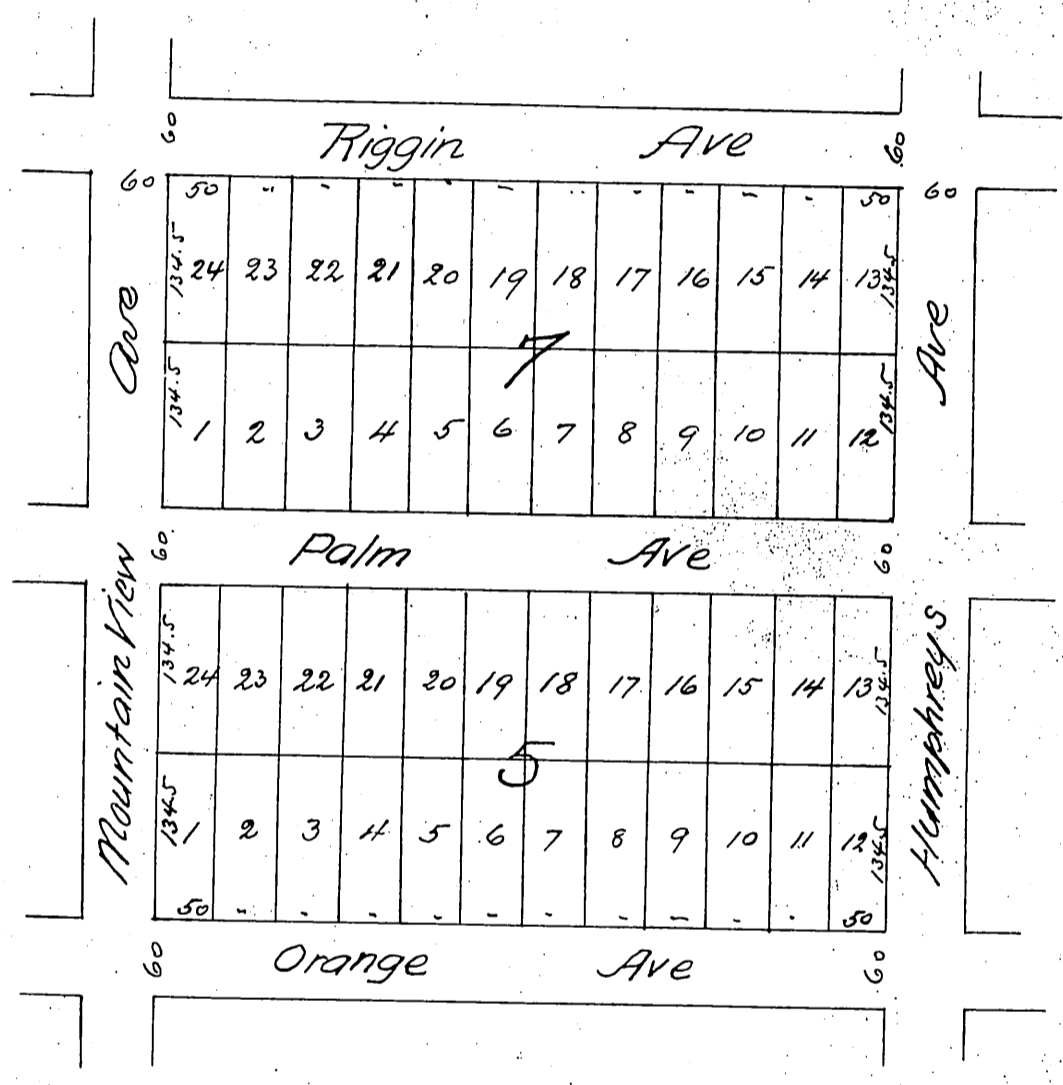


L. H. Whitson's Subdivision of Blocks 5 and 7 in

Humphrey's 1st Addition to Boyle Heights

Surveyed by E. T. Wright April 17 1887



a full true and correct copy of the original
recorded December 23rd 1887 at 2²⁴ P. M. at request
of L. H. Whitson

Frank A. Gibson Co Recorder
by Wm S. Johnston Deputy