

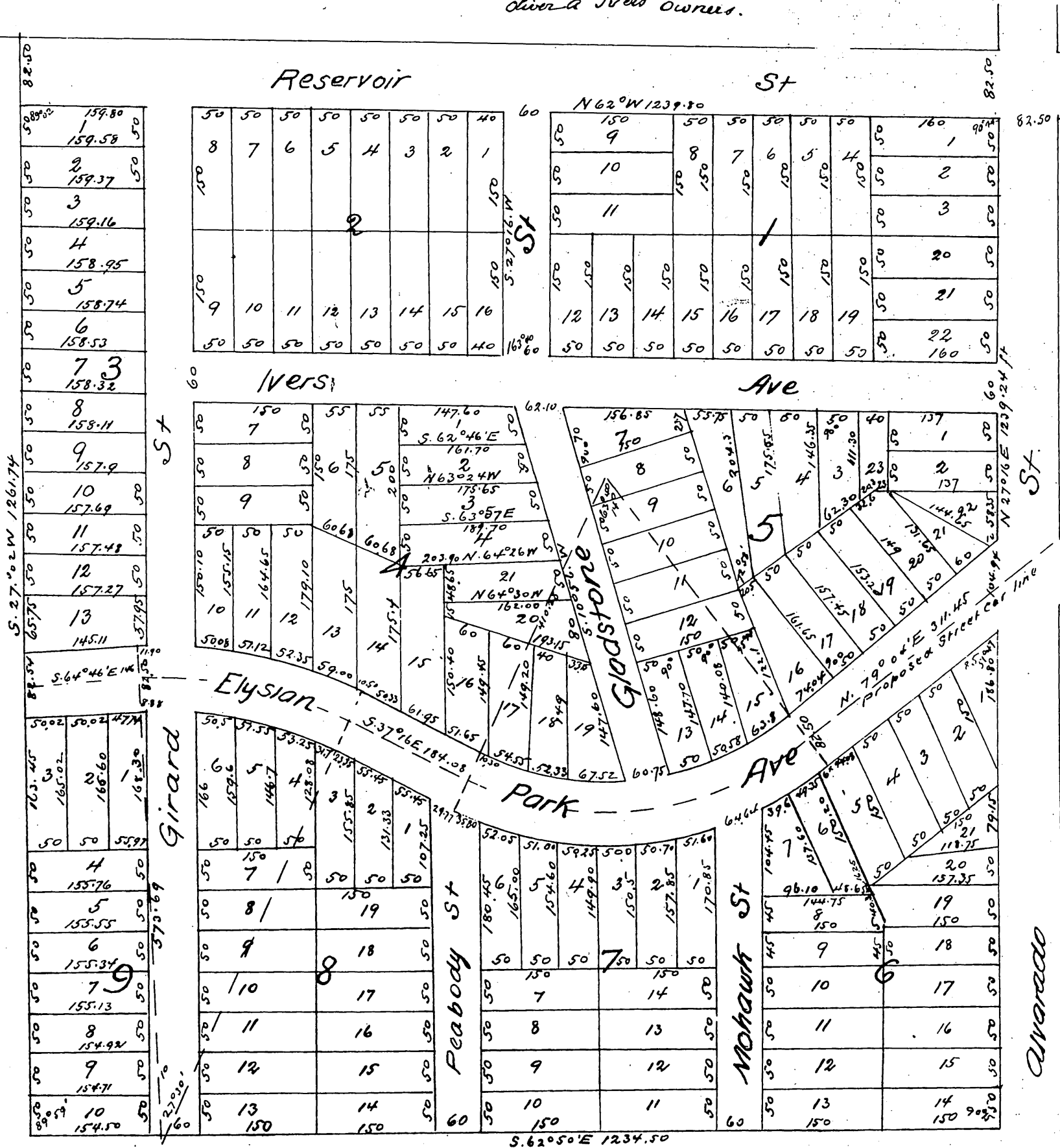


Map of Washington Heights

City of Los Angeles
Surveyed Nov. 1886 by G. E. Pillsbury.
Scale 100ft to one inch

Note
Washington Heights is a Sub. Division of Lot 1 Block 28
Hancock's Survey of 35 Acre Donation Lots City of
Los Angeles

John S. Maltman
Owner & Surveyor



A full true and correct copy of the original (reduced to the scale of 150ft to an inch) recorded Dec 24th 1887 at 2:55 P.M. at request of Maltman and Ivers

Frank A. Gibson Co Recorder
by Wm. S. Johnston Deputy