

W.S. Doud's Subdivision

of Lot 2 of

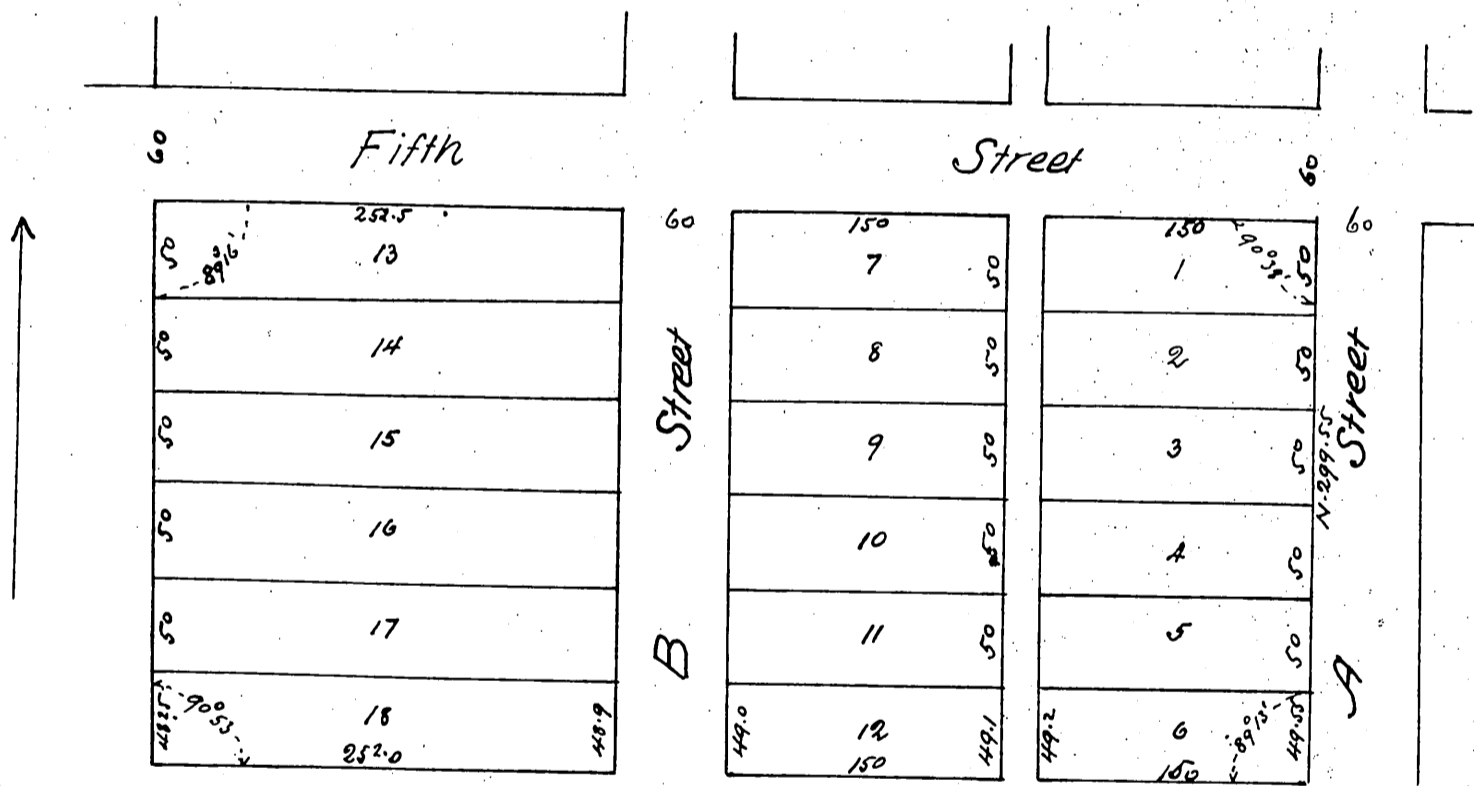
Byram, Patterson and Millers Subdivision

in

Glendale

Surveyed and platted Dec. 1887 by Stephens & Miller

Scale 100ft = 1 inch



a full, true and correct copy of the Original recorded
 December 27th 1887 at 15^o P. M. at request of W. S. Doud
 Frank A. Gibson County Recorder
 by Wm. E. Johnston Deputy