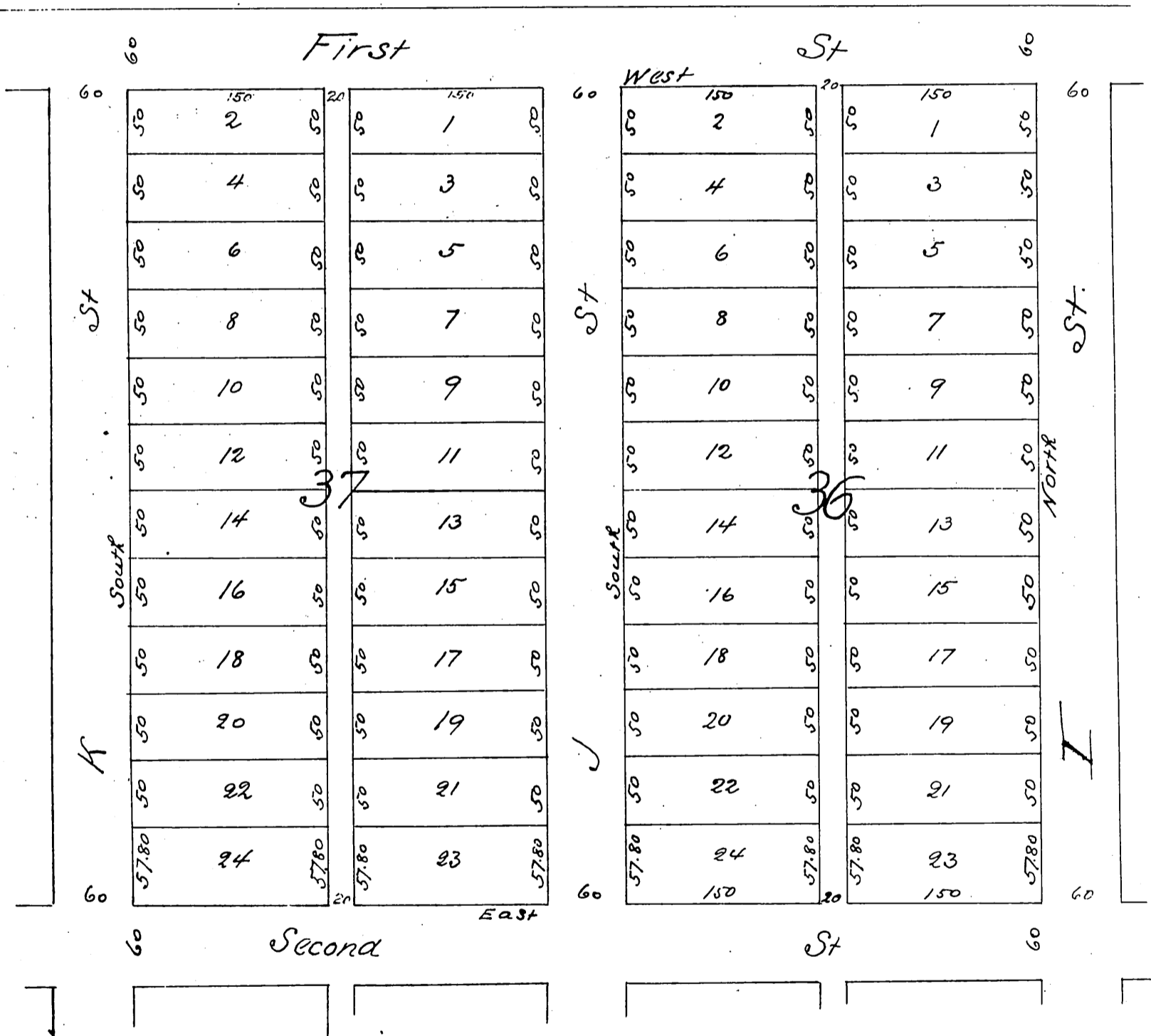


Map
of
Pierce and Farnum's Subdivision
of
Blocks 36th & 37th Glendale Townsite
Los Angeles Co Cal
Surveyed May 1887 by E.T. Wright
Scale 100 ft. to one inch



A full true and correct copy of the original
recorded December 27th 1887 at 2:13 P. M. at
request of R.W. Pierce

Frank A. Gibson Co Recorder
by Wm E. Johnston Deputy