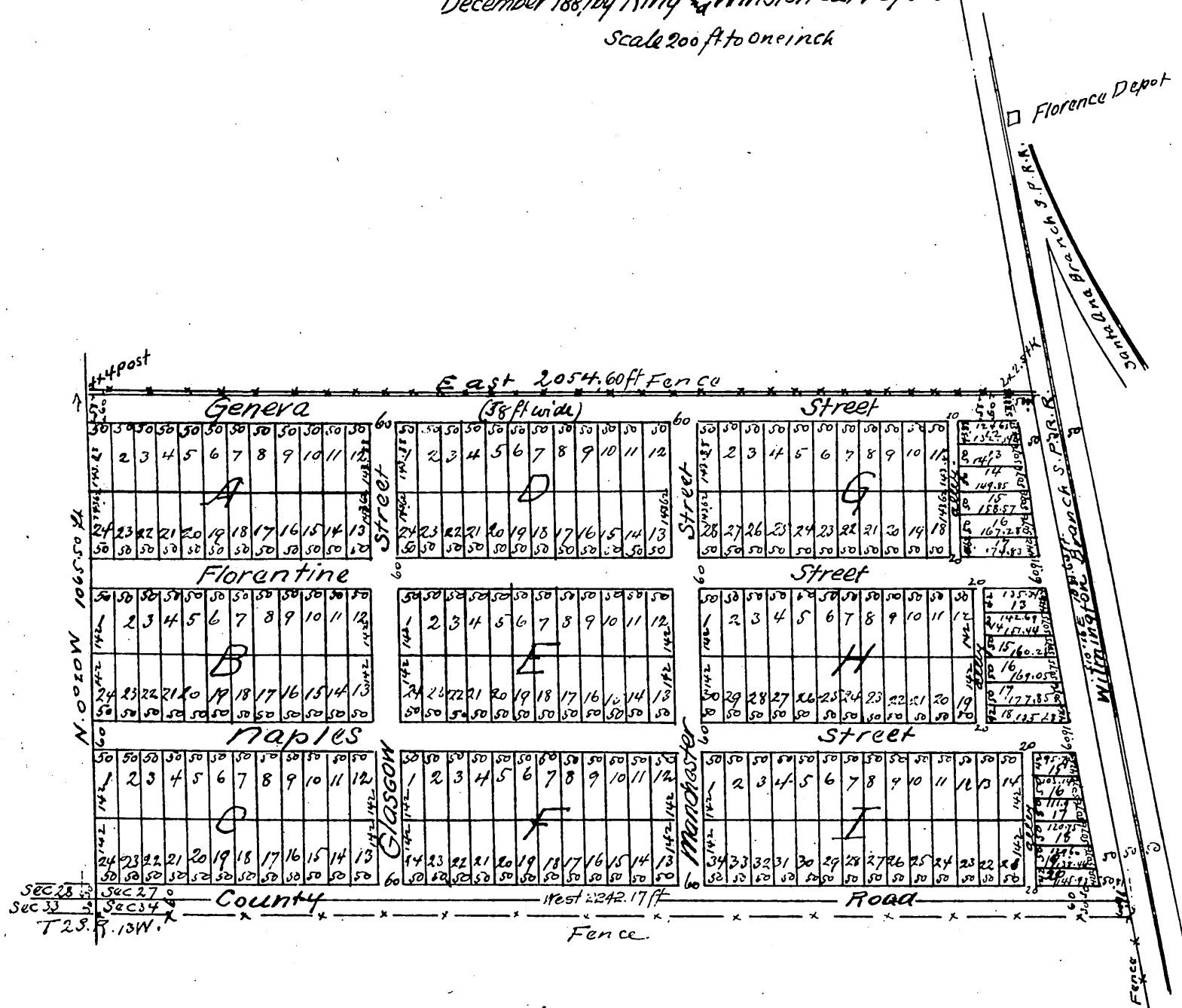


Map of the Florentine Tract

County of Los Angeles Cal.
As subdivided at request of E.S. Field in
December 1887 by King & Winston Surveyors
Scale 200 ft to one inch



A full true and correct copy of the original (reduced to the scale of 300 ft to inch) (recorded Jan. 23rd 1888 at 3⁵⁰ P.M. at request of E.S. Field

Frank A. Gibson County Recorder
by Wm E. Johnston, Deputy