

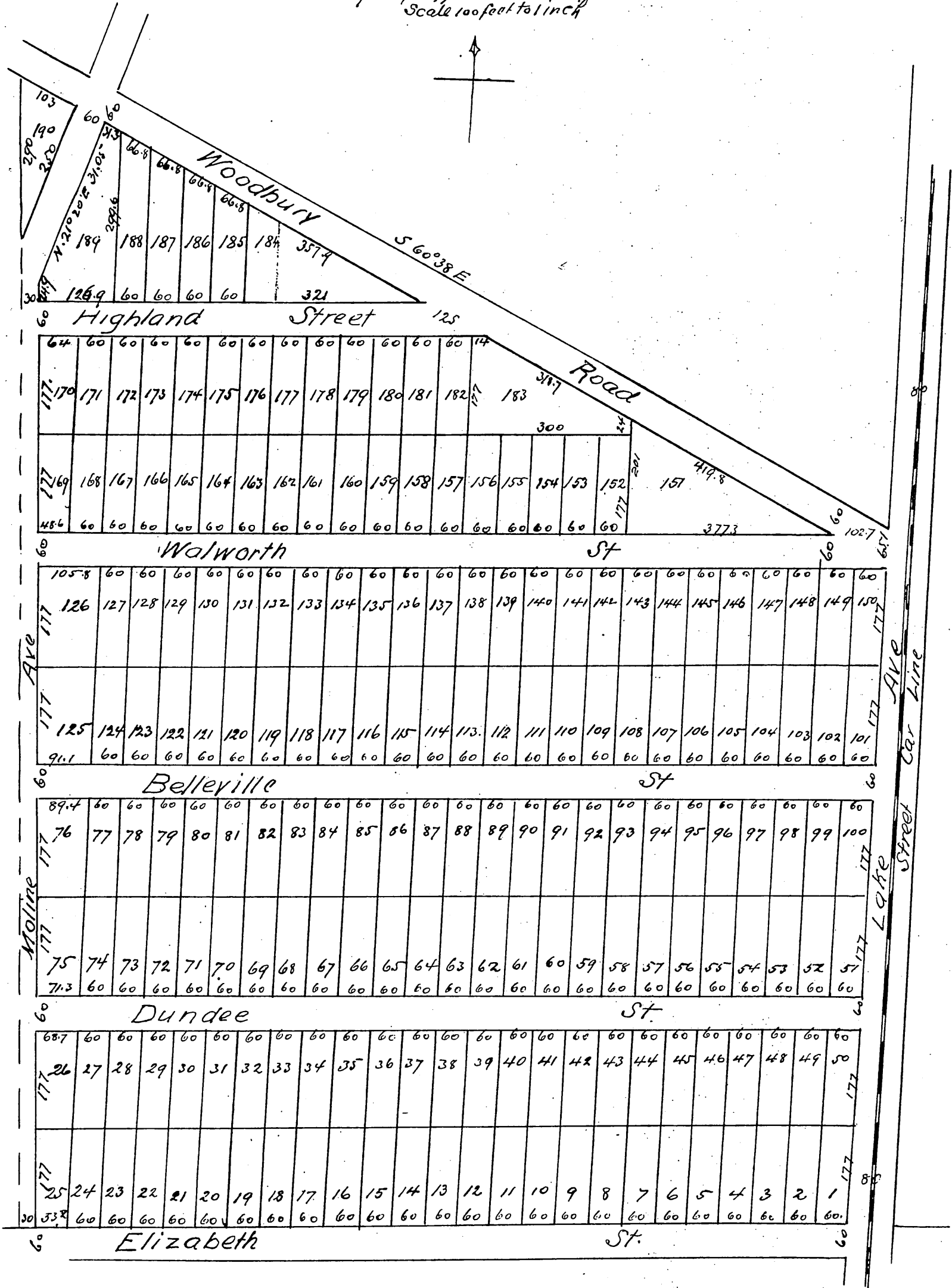
Dundee Heights

Being a subdivision of the North sixty acres of Block M.
of

Painter and Ball Tract

Pasadena Cal

Surveyed by Riggins Bros Surveyors Sept 1887.
Scale 100 feet to 1 inch



A full true and correct copy of the original (reduced to an exact ^{one half} size) recorded Feb. 8 1888 at 4 1/2 P.M. at request of Riggins Bros

Frank A. Gibson Co Recorder
by Wm E. Johnston Deputy