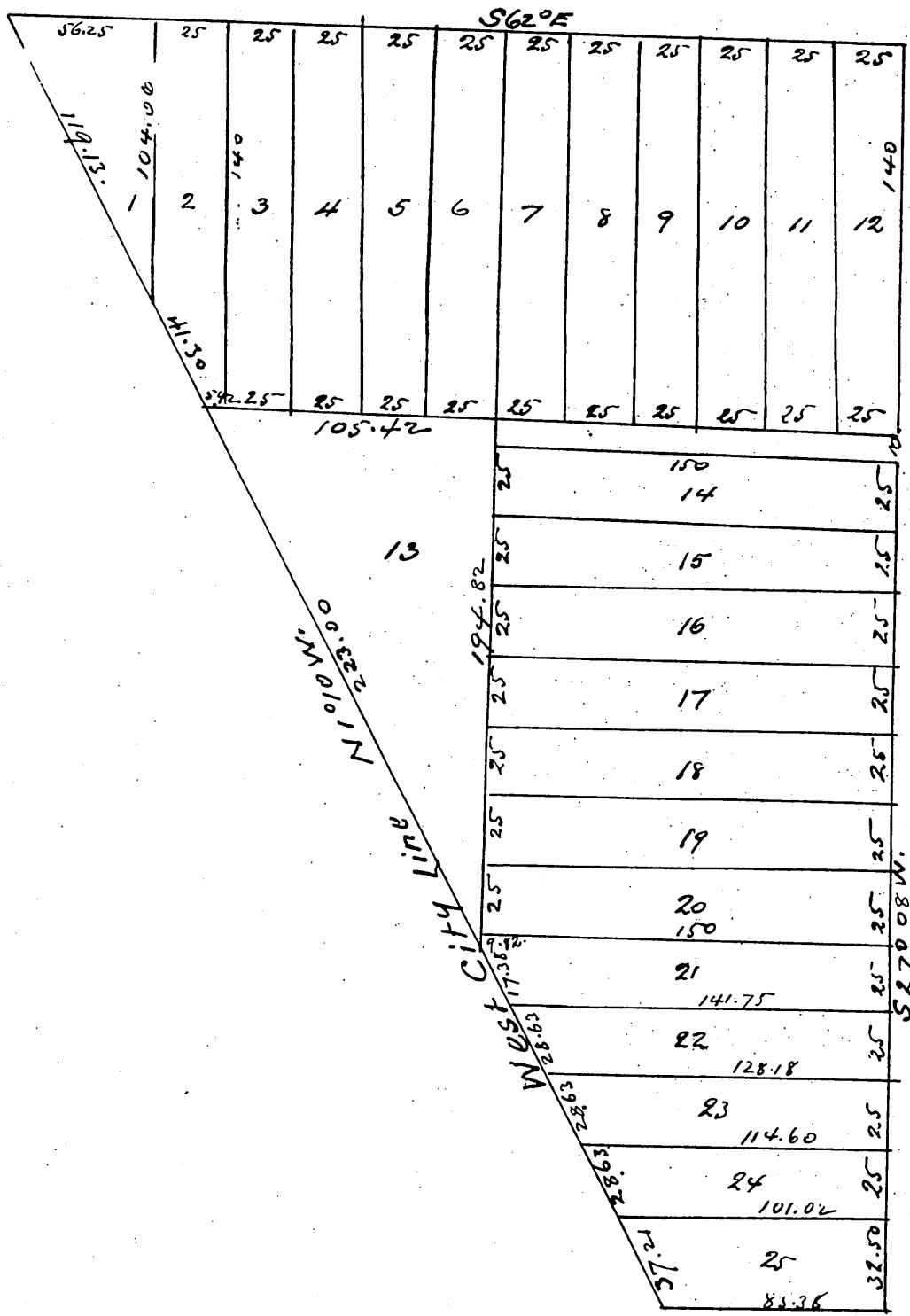


Map  
of  
J. Baruch's Resubdivision  
cor of Washington and Hoover Sts  
Los Angeles City Cal  
Surveyed Feb 1888 by Wright & Nicholson  
Scale 60 ft to 1 inch

Washington Street



Street

Hoover

Hoover Tract.

Freeman St 60

A full true and correct copy of  
the original recorded Feb. 14<sup>th</sup> 1888  
at 3<sup>23</sup> p.m. at request of Abe Haas  
Frank A Gibson Co Recorder  
by Wm E. Johnston Deputy.