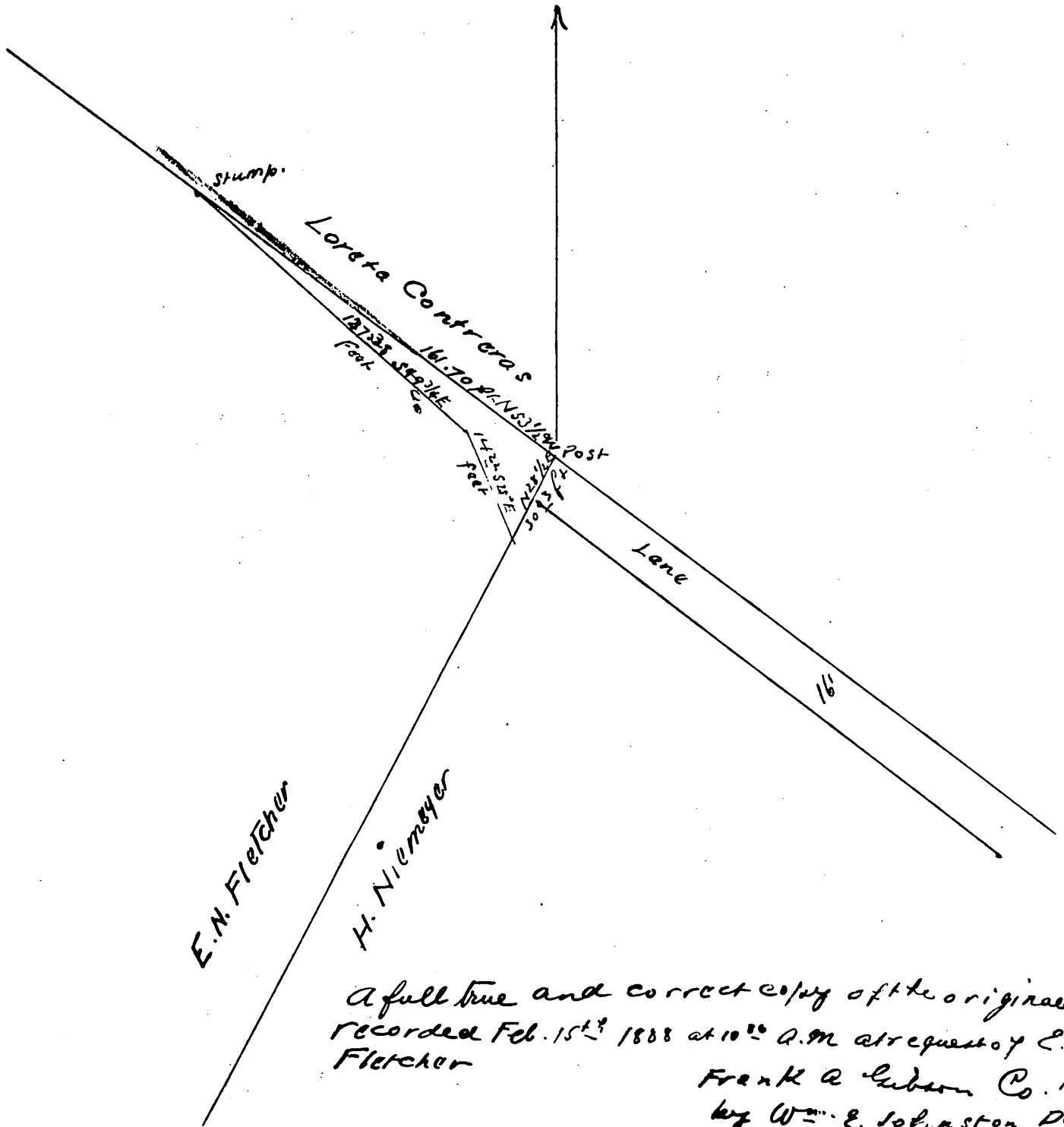


# Plat

Showing the lot of land joining the Fletcher Tract situated in the City of Los Angeles being a portion of Loreta Contreras Tract

Surveyed by Wm. Moore C.E. Feb. 1888

Scale 50 feet to an inch



A full true and correct copy of the original recorded Feb. 15<sup>th</sup> 1888 at 10<sup>00</sup> A.M. at request of E.N. Fletcher

Frank A. Lubson Co. Recorder  
by Wm. E. Johnston Deputy