

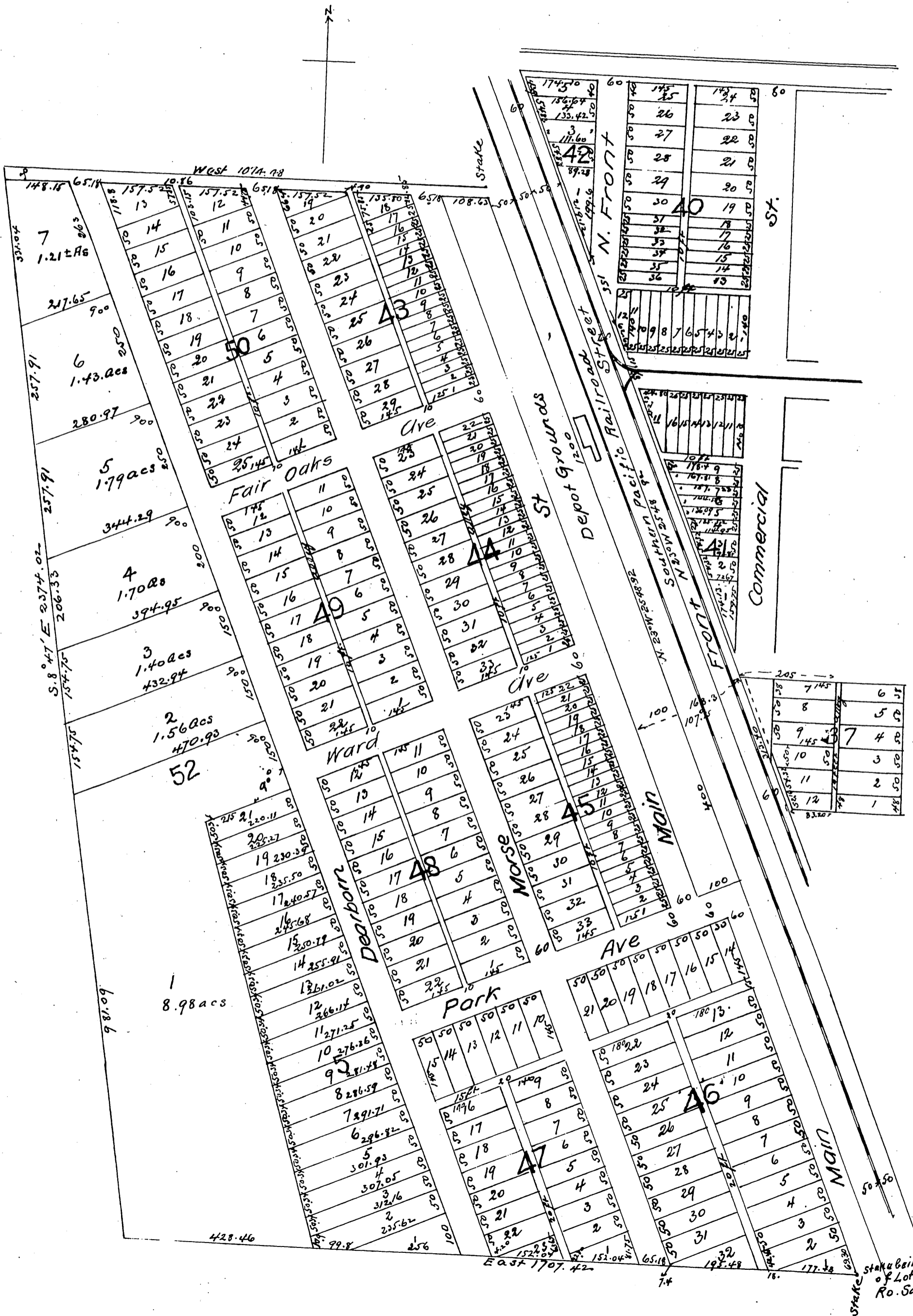
MR. 28-75

111ap
OF

West Glendale

Subdivided by Ward Bros et als
Los Angeles County California
Surveyed November 1887 by V. J. Rowan Surveyor
Scale 200 feet to one inch

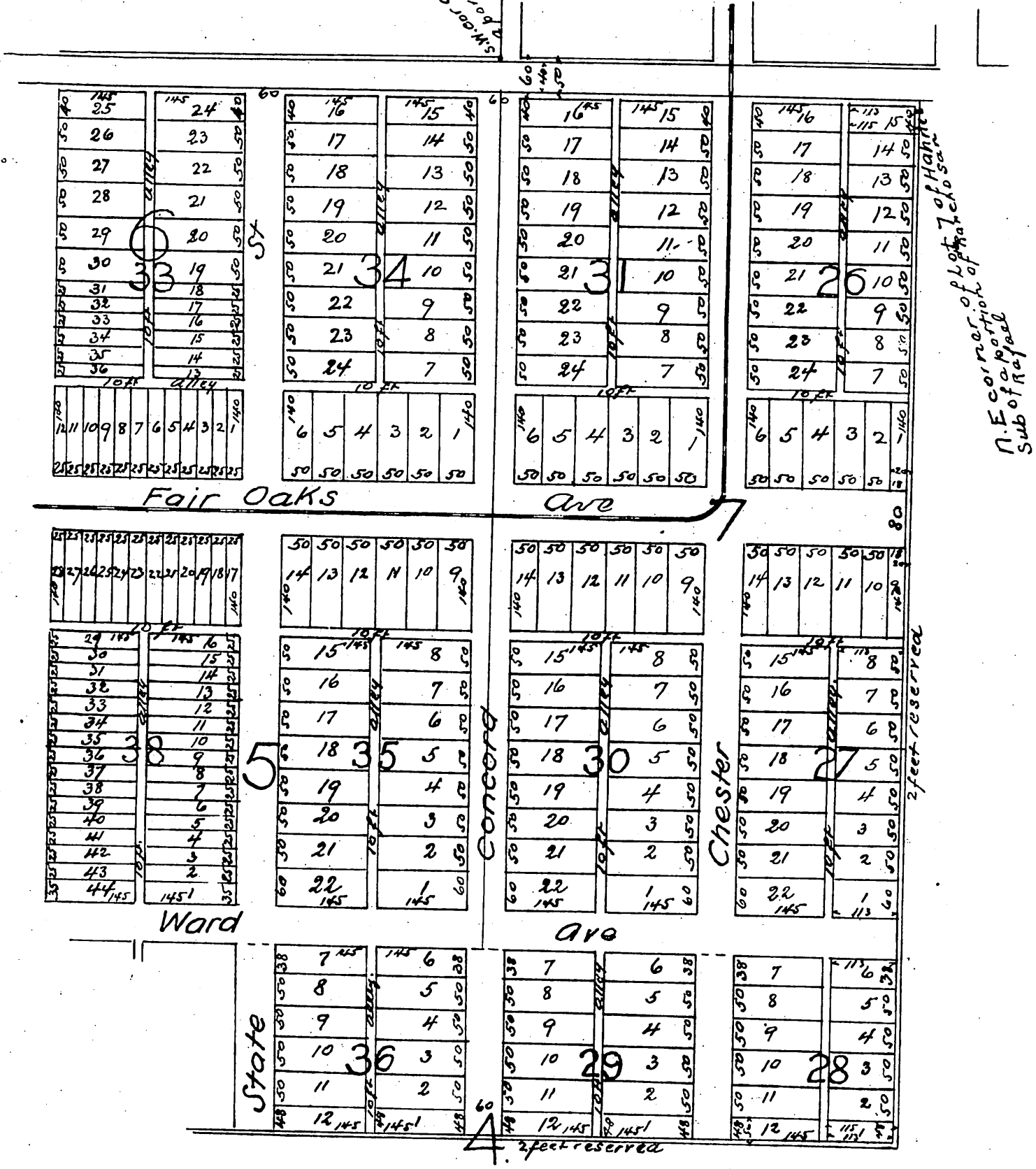
10



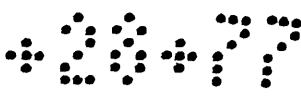
Stake being the N.E. corner of Lot 40 Riverdale Ro. San Rafael



SMALL PORTION OF LOT 12 OF HAHNES SUBD. & A SMALL PORTION OF RANCHO SAN RAFAEL



Note
 West Glendale is a Subdivision of Lots 5, 6, 7, 10, 11 & 12
 and the North 1/2 of Lot 4 of Hahnes Subdivision of
 a portion of the Rancho San Rafael also of a certain
 tract of Land recorded in Book 227 Page 149 of Deeds
 Los Angeles County California



N. E. corner of lot 10 of Rancho of Hahn's Subdivision of a portion of the Rancho San Rafael.

N. W. corner of lot 10 of Rancho of Hahn's Subdivision of a portion of the Rancho San Rafael.

2 feet reserved		Maple		Ave		Ave		2 feet reserved	
13	12	13	12	13	12	13	12	13	12
14	11	14	11	14	11	14	11	14	11
15	10	15	10	15	10	15	10	15	10
16	9	16	9	16	9	16	9	16	9
17	8	17	8	17	8	17	8	17	8
18	7	18	7	18	7	18	7	18	7
19	6	19	6	19	6	19	6	19	6
20	5	20	5	20	5	20	5	20	5
21	4	21	4	21	4	21	4	21	4
22	3	22	3	22	3	22	3	22	3
23	2	23	2	23	2	23	2	23	2
24	1	24	1	24	1	24	1	24	1
2 feet reserved		Laurel		Jackson		Barnard		Glendale	
13	12	13	12	13	12	13	12	13	12
14	11	14	11	14	11	14	11	14	11
15	10	15	10	15	10	15	10	15	10
16	9	16	9	16	9	16	9	16	9
17	8	17	8	17	8	17	8	17	8
18	7	18	7	18	7	18	7	18	7
19	6	19	6	19	6	19	6	19	6
20	5	20	5	20	5	20	5	20	5
21	4	21	4	21	4	21	4	21	4
22	3	22	3	22	3	22	3	22	3
23	2	23	2	23	2	23	2	23	2
24	1	24	1	24	1	24	1	24	1
2 feet reserved		Sycamore		Ave		Washington		2 feet reserved	
13	12	13	12	13	12	13	12	13	12
14	11	14	11	14	11	14	11	14	11
15	10	15	10	15	10	15	10	15	10
16	9	16	9	16	9	16	9	16	9
17	8	17	8	17	8	17	8	17	8
18	7	18	7	18	7	18	7	18	7
19	6	19	6	19	6	19	6	19	6
20	5	20	5	20	5	20	5	20	5
21	4	21	4	21	4	21	4	21	4
22	3	22	3	22	3	22	3	22	3
23	2	23	2	23	2	23	2	23	2
24	1	24	1	24	1	24	1	24	1

S. E. corner of lot 10 of Rancho of Hahn's Subdivision of a portion of the Rancho San Rafael.

S. E. corner of lot 10 of Rancho of Hahn's Subdivision of a portion of the Rancho San Rafael.

A full true and correct copy of the original recorded Feb 15th 1888 at 2:29 P.M. at request of Ben E. Ward Frank A. Gibson County Recorder by H. E. Johnston deputy