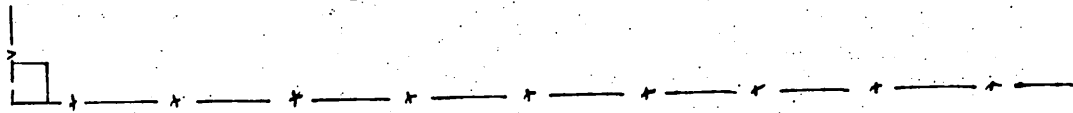
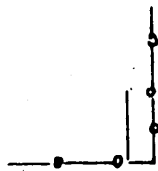
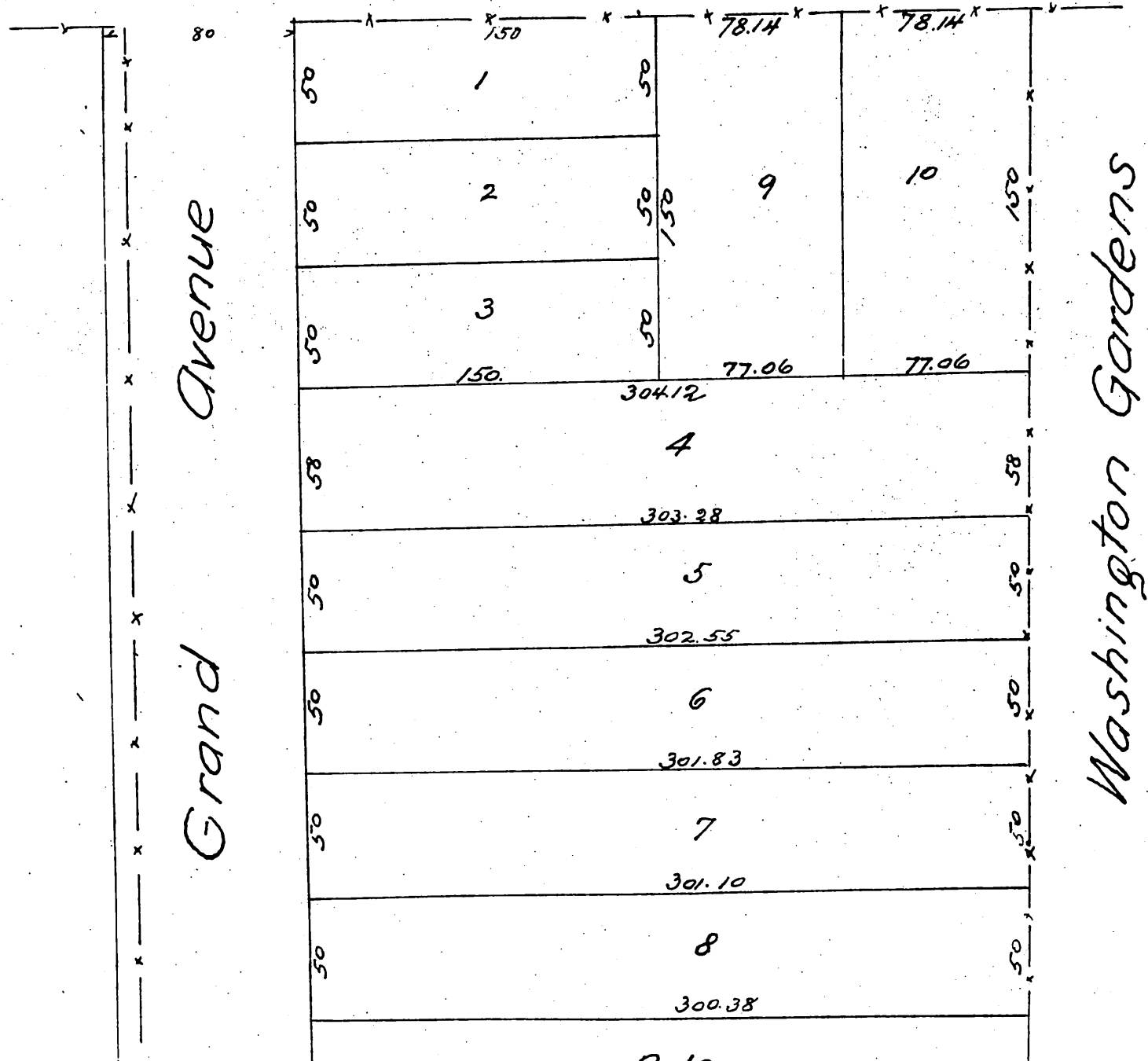




Plat
of
Garahl & Spilly's Subdivision
of a part of the
Washington Garden Tract
in Lot 2 Block 1 Hancock's Survey
City of Los Angeles
Surveyed at request of Mr Garahl in June 1887
By King and Winston
Scale 60 feet to one inch



Washington Street



Grand Avenue

Grand Avenue

Washington Gardens

Note

- Fences — x — x — x — x — x —
- Hedges — o — o — o — o —
- Line of Grand Ave (Charity St)
as located by Knox. —————

A full true and correct copy of the original
recorded Mar 27 1888 at 9 56 a. m. at request
of C. Garahl
Frank A. Gibson Co. Recorder
by Wm. E. Johnston Deputy