

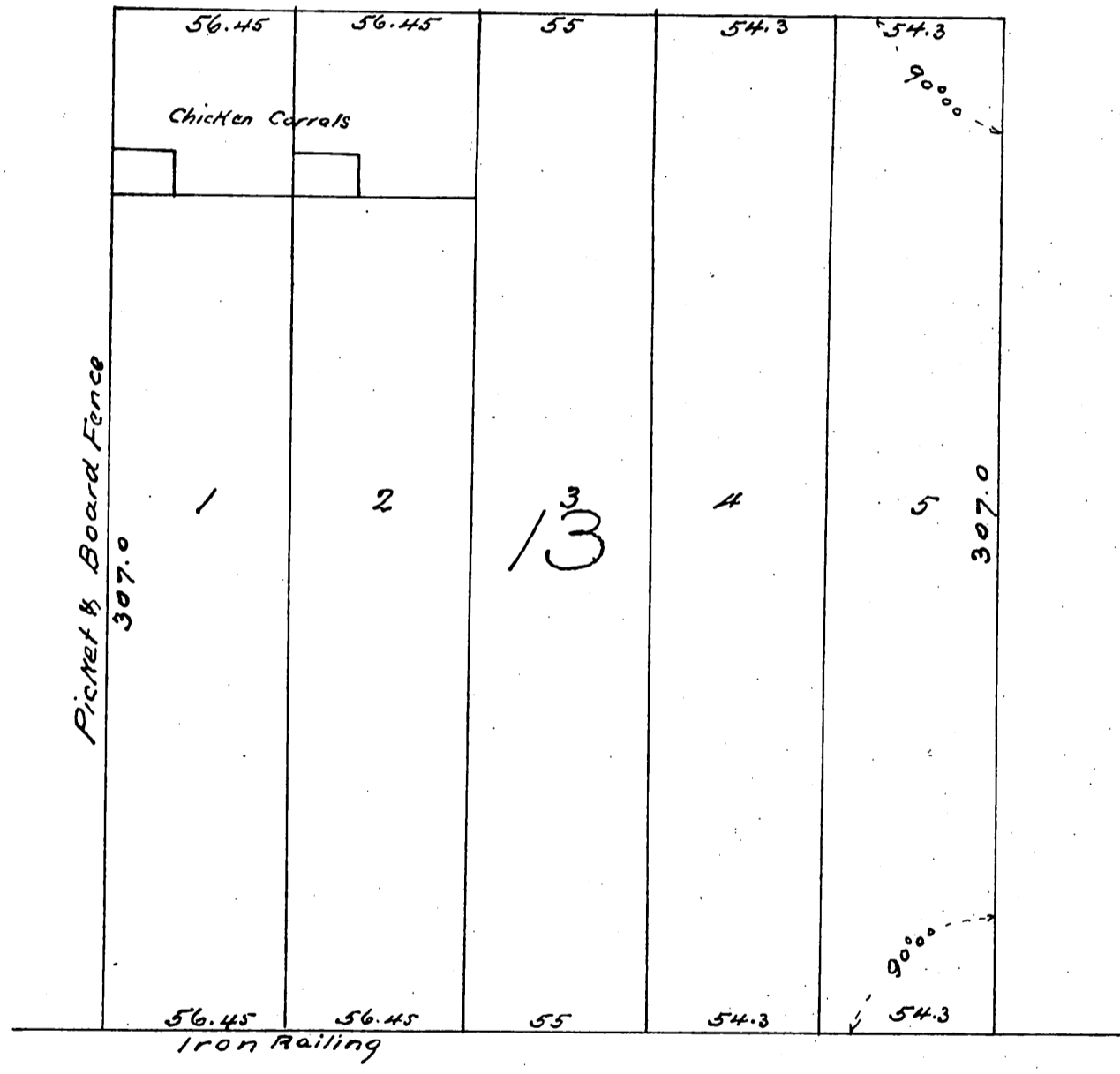


Map of Stockwell's Subdivision

of Lot 13 Griffin Tract E.L.A

Scale 50ft to one inch

Wm. T. Lambie City Surveyor
April 10th 1888



Daly Street

a full true and correct copy of the original
recorded April 13th 1888 at 11^o A.M. at
request of Stockwell and Son

Frank A. Gibson Co. Recorder
by Wm. E. Johnston Deputy