

# Map of the Sheboygan Tract

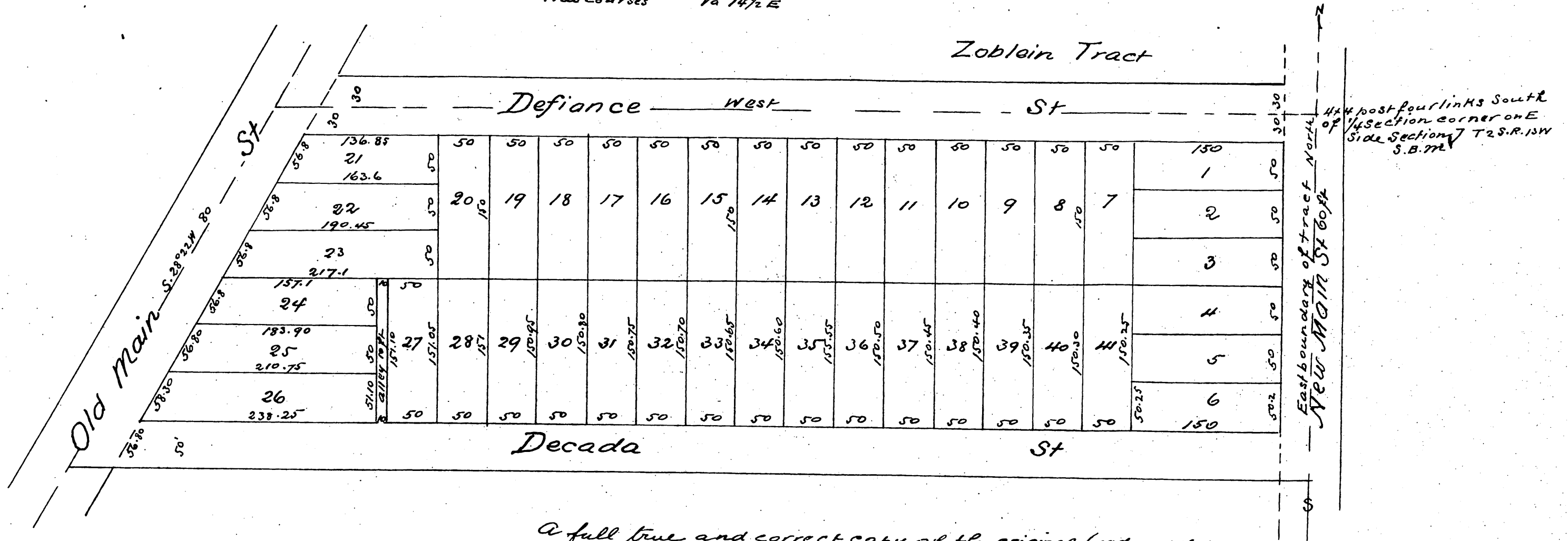
Situated in the E 1/2 of the S.E. 1/4 of Sec 7 T 2 S R 13 W. S.B.M.

as surveyed by John Goldsworthy County Surveyor

Feb 24<sup>th</sup> 1888

Scale 50 feet = 1 inch

True courses Va 14 1/2 E



A full true and correct copy of the original (reduced 1/2)  
 recorded April 14, 1888 at 3:29 P.M. at request of Sr. J. Schmitz  
 Frank A. Gibson Co Recorder  
 by Wm E. Johnston Deputy.

