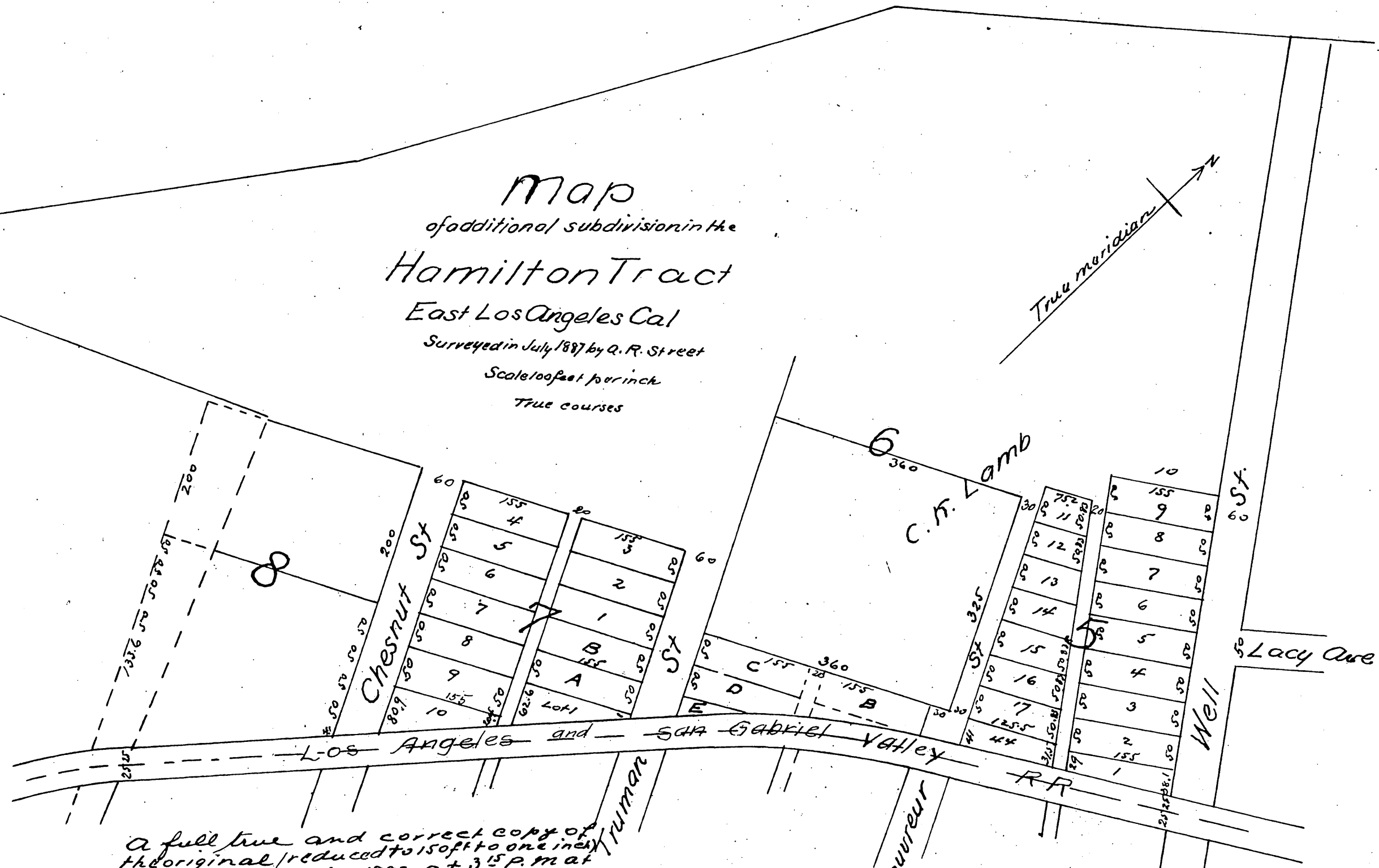
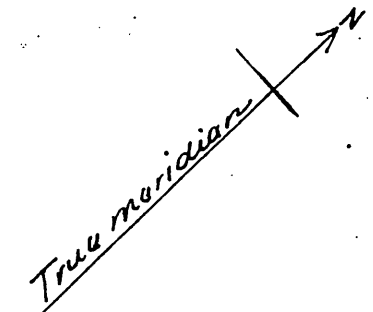


Map
of additional subdivision in the
Hamilton Tract
East Los Angeles Cal
Surveyed in July 1887 by Q. R. Street
Scale 100 feet per inch
True courses



A full true and correct copy of
the original (reduced to 150 ft to one inch)
recorded April 16, 1888 at 3:15 P.M. at
request of E. M. Hamilton
Frank A. Gibson Co Recorder
by Wm E Johnston Deputy

