

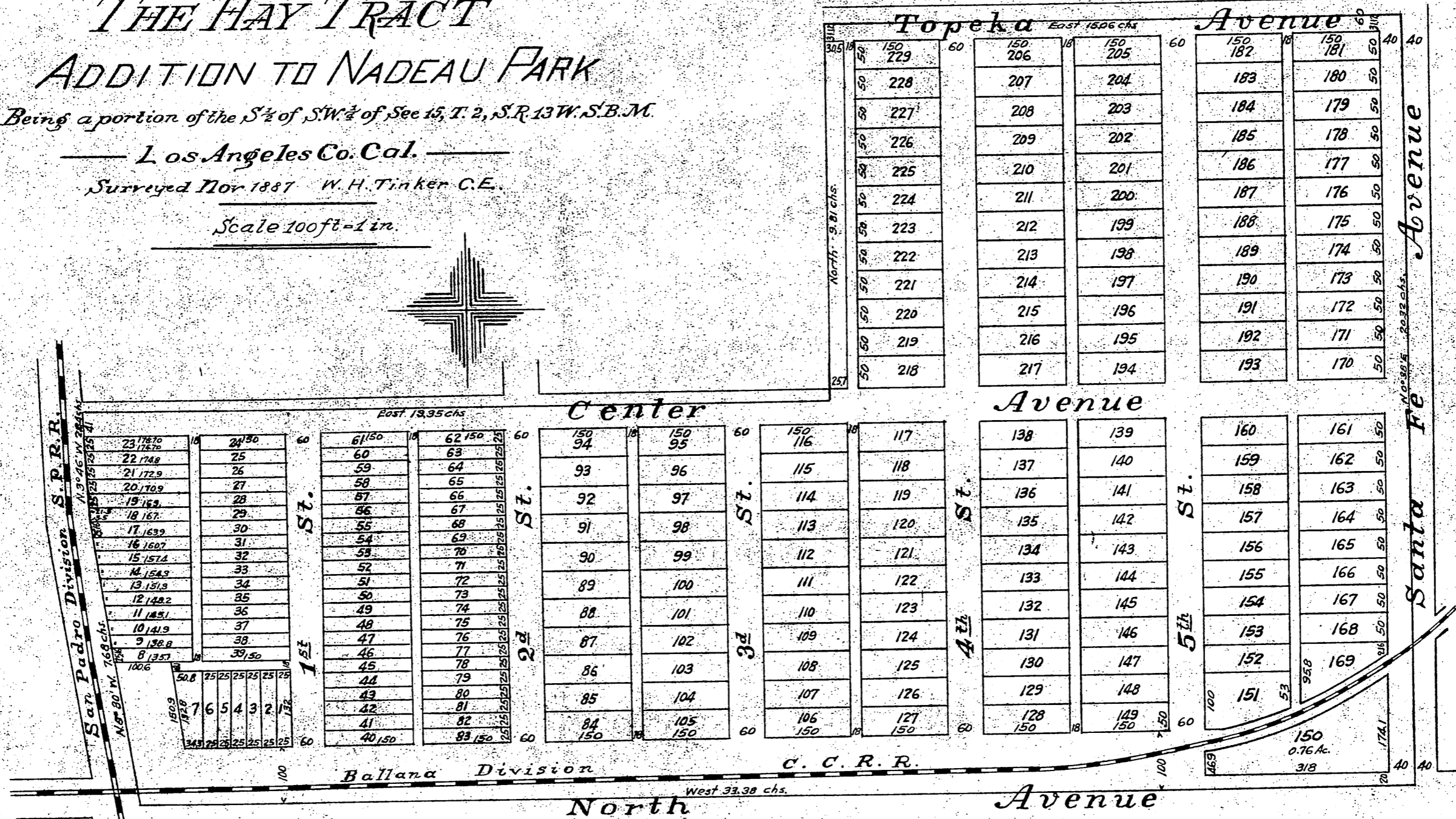
MAP of THE HAY TRACT ADDITION TO NADEAU PARK

Being a portion of the S¹/₂ of S¹/₂ of Sec 15, T. 2, S. R. 13 W. S. B. M.

Los Angeles Co. Cal.

Surveyed Nov 1887 W. H. Tinker C.E.

Scale 100ft = 1 in.



State of California
 County of Los Angeles
 I, *W. H. Tinker*, Civil Engineer,
 do hereby certify that the above is a true and correct copy of the original records of the Hay Tract Addition to Nadeau Park as shown on the maps of the Hay Tract Addition to Nadeau Park recorded in Book 2 of Miscellaneous Records of the County of Los Angeles, California, at page 25 of the same.

A full, true and correct copy of the original (reduced to 200 feet to one inch) recorded
 December 30th 1887 at 18 Min past 3 P.M. at request of *J. W. Gardner*
Frank A. Gibson Co. Recorder
 by *W. C. Johnston*, Deputy

25