

# MAP of EAST PASADENA

Being the Subdivision of the Fleming Compton & Lyman Tracts  
on Colorado St comprising 60 acres and subdivided into  
121 lots with 80 foot Avenues, by  
C. S. Compton & Co.

Surreyed in Dec. 1887  
Scale 100 ft to 1 inch  Fred Morsh, Draughtsman.

Note. Where the Avenues intersect with Fountain Street circles are reserved with a 15 ft radius for fountain purposes and not to interfere with the width of Avenues the corners of blocks are cut with a 55 foot radius as shown by the map

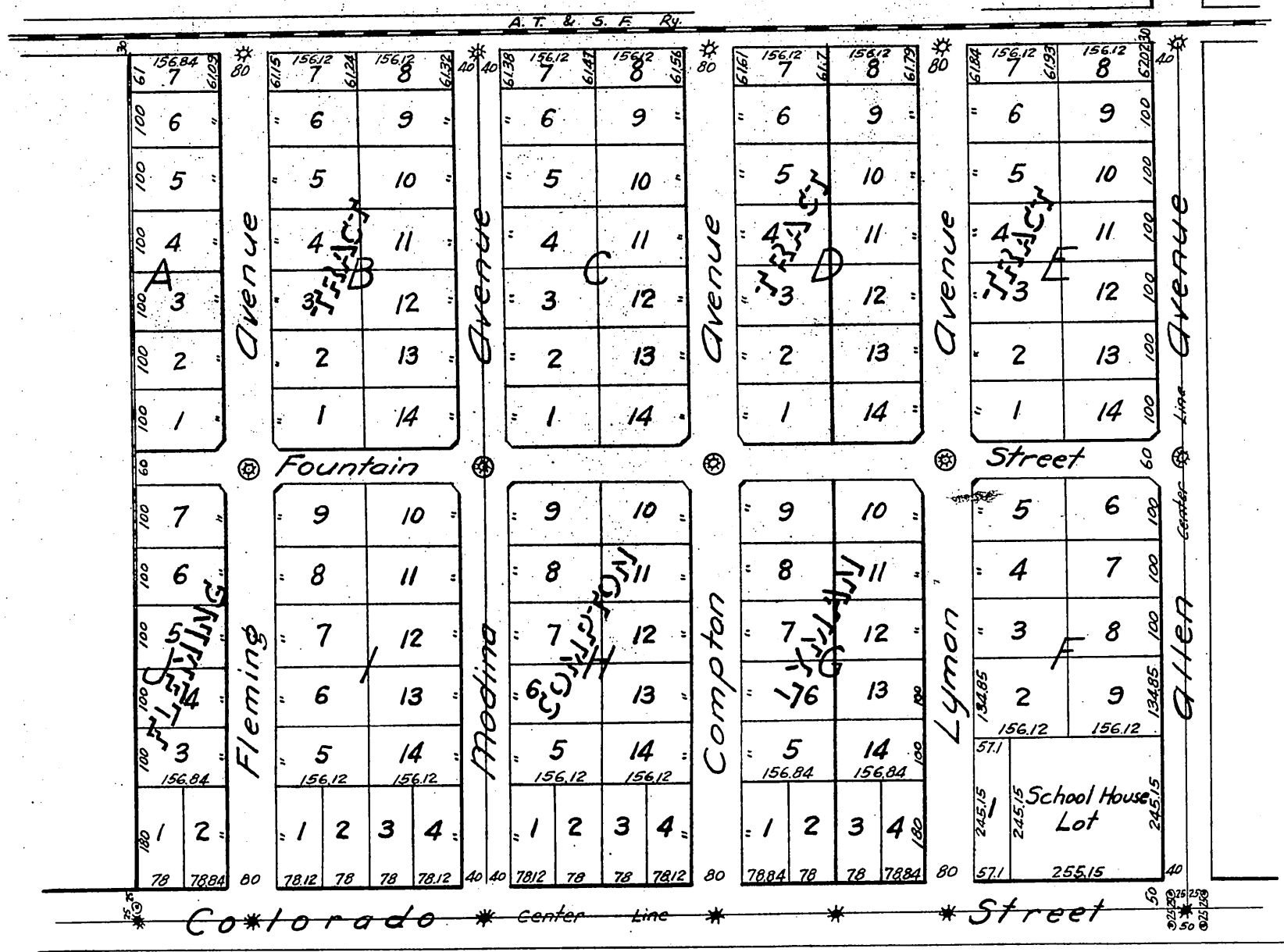
\* Iron stakes 3/8" x 3'  
⊙ Original Stakes

*Field notes of boundary lines.*

Found original corners at intersection of Colorado St. & Allen Ave. as shown on map. From this point I run N. on con. line of Colorado St. (as located by lines of recent surveys at Hill Ave. 4 points N. 126 7/100 chs. the sum of the distances called for in the deeds for the three 20 acre tracts owned by Lyman & Co., Compton & Fleming and set temporary corner for S.W. cor. to Fleming tract. Then from the intersection of Colorado St. & the E. line of the City Vineyard Land & Water Co's land I run E. on con. line of Colorado St. 32 2/100 chs. the dist. called for in Mr. Fleming's deed, to his S.W. cor. This dist lacked 2.35 ft. of closing with the measurement from the intersection of Colorado St. & Allen Ave. as I proportioned the error, - giving 1.28 ft. to the N. end of the line & 1.07 ft. to the E. end, and drove the iron cor. as shown by map. Proceeded then to the N. boundary.

The con. of the A. T. & S. F. Ry. track was presumed to have been located exactly on the N. line of these three 20 acre tracts. To test this I set up the instrument over the con. of the Ry. track about the con. of Allen Ave. and back sighted E. to an original stake set at the N.E. cor. of Mr. Byram's 20 acre tract (being the 2<sup>nd</sup> one E. of Allen Ave.). The con. of Ry. track lined with this proving it to lay over the N. boundary line. To locate the intersection of Allen Ave. with the con. of the A. T. & S. F. Ry. track I run N. along this line from the stake marking the N.E. cor. of Mr. Byram's tract 17 6/100 chs. (the dist. called for in the deeds for the two 20 acre tracts E. of Allen Ave.) and set a temporary cor. in the con. of Ry. track. To compare my measurements (made with the latest improved 100 ft. steel tape) I returned to the intersection of Colorado St. and Allen Ave. and run E. along Colorado St. Finding the first two original corners and my measurements checking with each within 0.4 ft. (over running) I returned to my temporary corner at intersection of Allen Ave. & Ry. track and set an iron corner (as shown by map) 30 ft. 3 on line with the intersection of Colorado St. & Allen Ave. From this point I run N. parallel to the Ry. track the same dist. as that laid off on Colorado St. N. from Allen Ave. and set the N.W. cor. of Mr. Fleming's Tract. Returned to the N.W. cor. of Fleming's tract and run N. along the N. boundary and at 25 ft. found the original stake as shown by map. Colorado St. and Allen Ave. were originally 50 ft. in width. This proves conclusively that my lines occupy the same position as those of the original survey. The N. boundary of the 60 acres overruns 0.62 ft. and the E. boundary overruns 1.67 ft.

C. S. Compton Surveyor  
Dec. 26, 1887.



For vac. Sts. M.R. 107-106

Recorded Dec. 31, 1887. at request of A. J. Compton.  
Reduced to 250 ft. to an inch.

For deed to Modena Ave. D: 3-285

*Compton*