

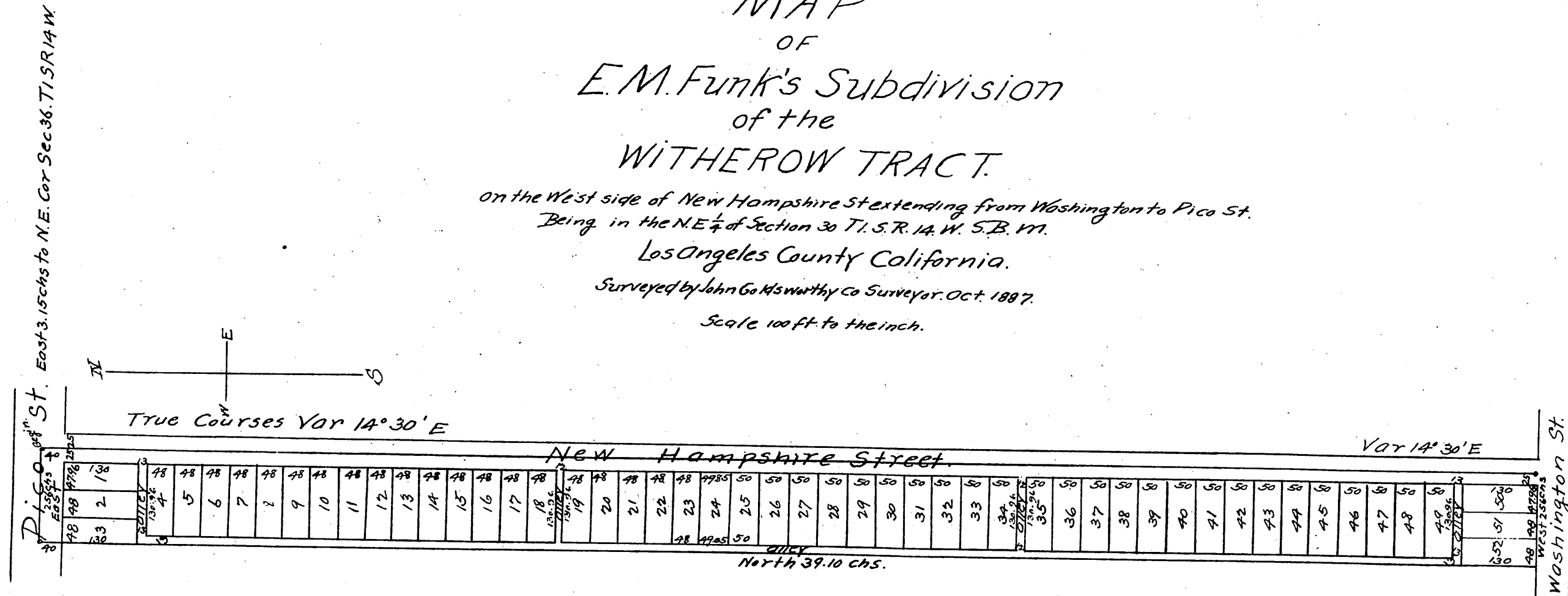
MAP OF E. M. Funk's Subdivision of the WITHEROW TRACT.

on the West side of New Hampshire St extending from Washington to Pico St.
Being in the N.E. $\frac{1}{4}$ of Section 30 T. 1. S. R. 14. W. 5. B. 111.

Los Angeles County California.

Surveyed by John Goldsworthy Co Surveyor. Oct. 1887.

Scale 100 ft. to the inch.



Los Angeles Aug 26th 1890
John Goldsworthy Ex County Surveyor deposes & says. That whereas the N. E. corner of "E. M. Funk's Subdivision of the Witherow Tract" as recorded in Book 29 page 5 miscellaneous Records of Los Angeles County is recorded as being 3 $\frac{15}{100}$ chains west from the N. E. corner of Section 36 T. 1. S. R. 14 W. 5. B. 111 said distance is an error for the record of my office and the distance as measured on the ground is 3 $\frac{25}{100}$ Chains from said corner of section 36 showing that there was a clerical error in calling the 70 1
John Goldsworthy
Ex County Surveyor.

A full true and correct copy of the original (reduced to 200 feet to one inch, recorded January 4th 1888 at 13 min past 11 a. m. at request of E. M. Funk.

Frank A. Gibson County Recorder.
By W^m E. Johnston Deputy.

O. C. Holmes.
Notary Public.

A full, true and correct copy of the original recorded Aug 26 1890 at 47 min past 10 a. m. at request of Joseph Daniels.
John W. Frances Co Recorder by Geo. Rugbee Deputy