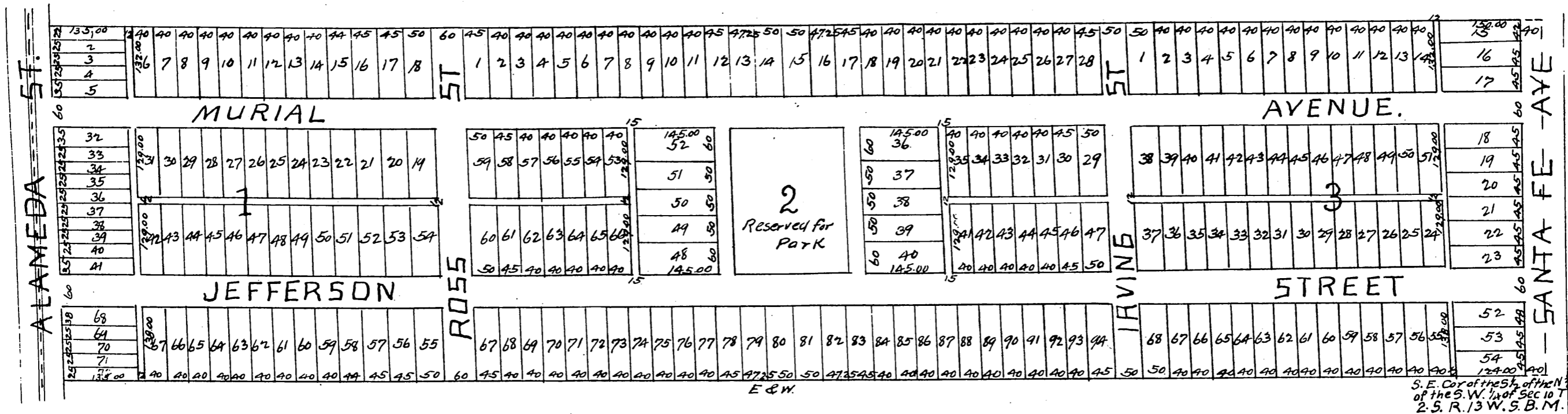


Corrected Map of the ALDINE SQUARE TRACT.

LOS ANGELES CO, CAL.
Surveyed Sept 1887 by E. G. Jones.

Scale 100' = 1"



A full true and correct copy of the original (reduced to 200 feet to 1 inch)
recorded January 20th 1888 at 10:19 a.m. at reg. office of the County Recorder.

Frank A. Gibb County Recorder.
By W. E. Johnston, Deputy.