

# MAP

of the

## Vernon Avenue Tract,

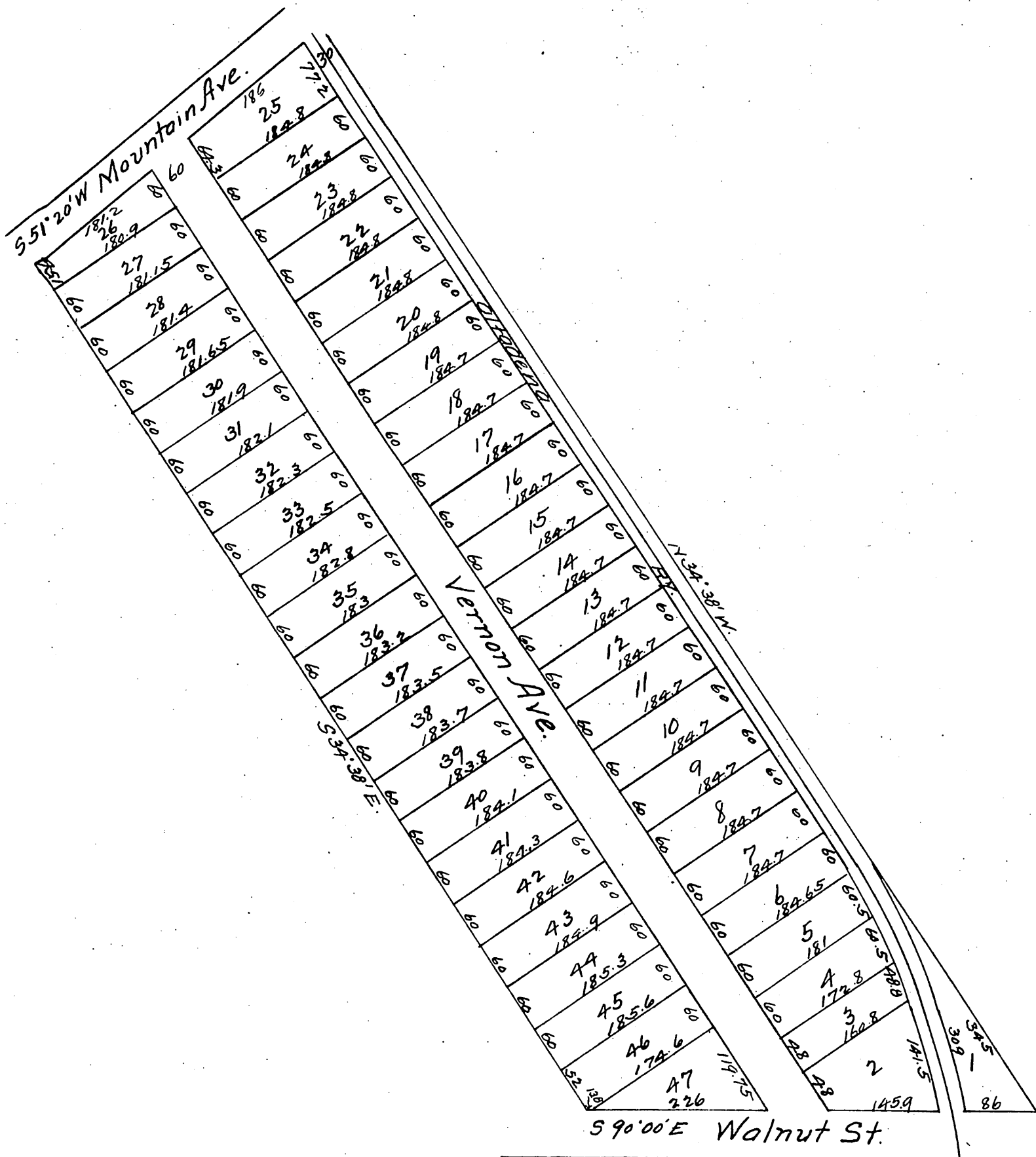
Being a Subdivision of the Northeast fifteen acres  
of the Jacob Weingarth Tract,

PASADENA, CAL.

Surveyed by W. E. Mount C.E.

Sept 1887.

Scale 100 ft to 1 inch.



A full true and correct copy of the original (reduced to 150 feet to one inch)  
 recorded Jan'y 26. 1888 at 40 min past 2 P. M. at request of H. G. Bennett.  
 Frank A. Gibson County Recorder.  
 By W. E. Johnston. Deputy.