

ALHAMBRA LIBRARY TRACT

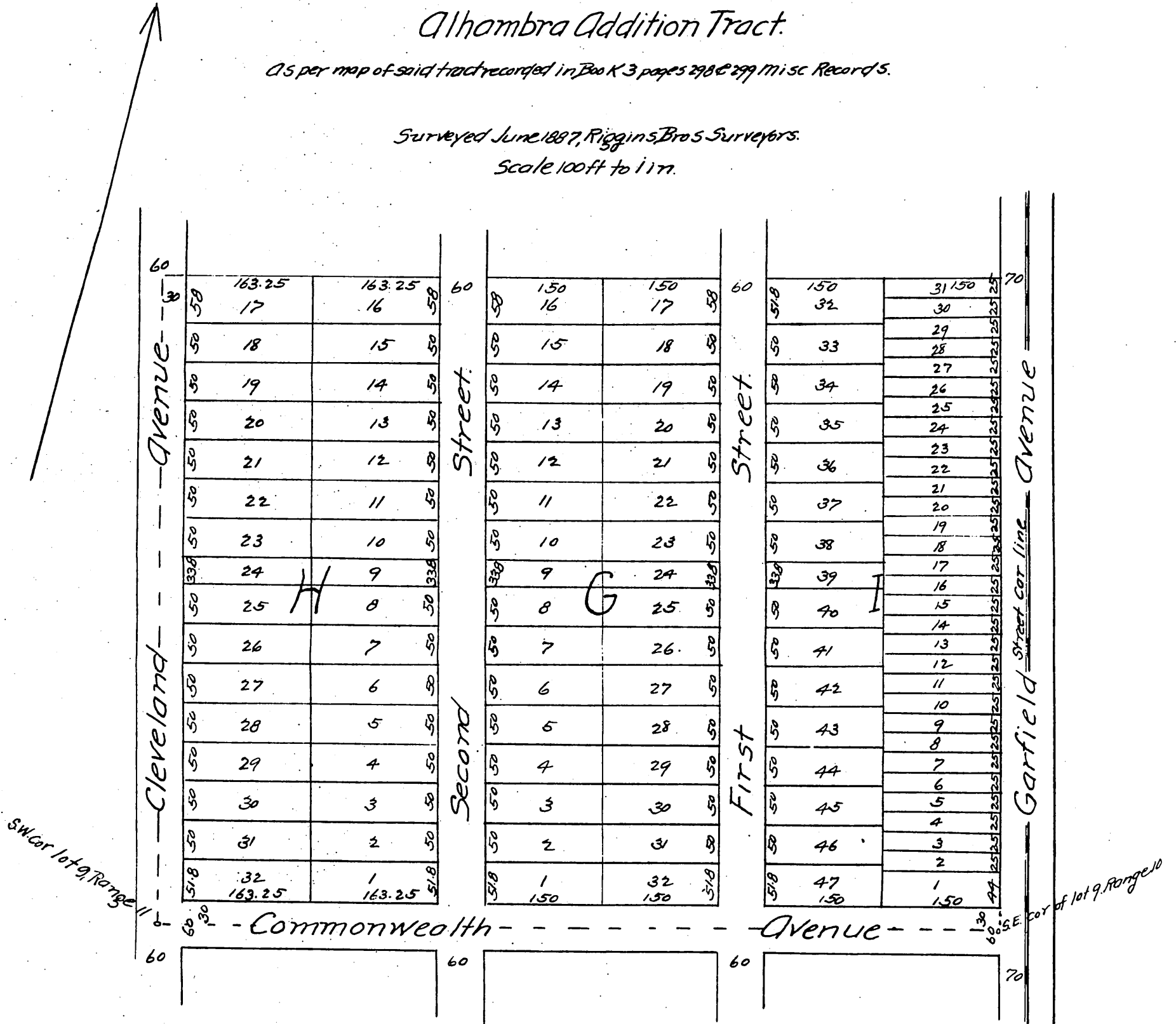
Being Lots 8 and 9, Range 10, and Lots 8 and 9, Range 11

Alhambra Addition Tract.

As per map of said tract recorded in Book K 3, pages 298 & 299 Misc Records.

Surveyed June 1887, Riggins, Bros Surveyors.

Scale 100ft to 1 in.



A full, true and correct copy of the original,
 (reduced to the scale of 150 feet to one inch)
 recorded March 16, 1888 at 4th min past 9.0 m.
 at request of Geo Rice.

Frank O Gibson County Recorder.
 By George Bugbee Deputy.