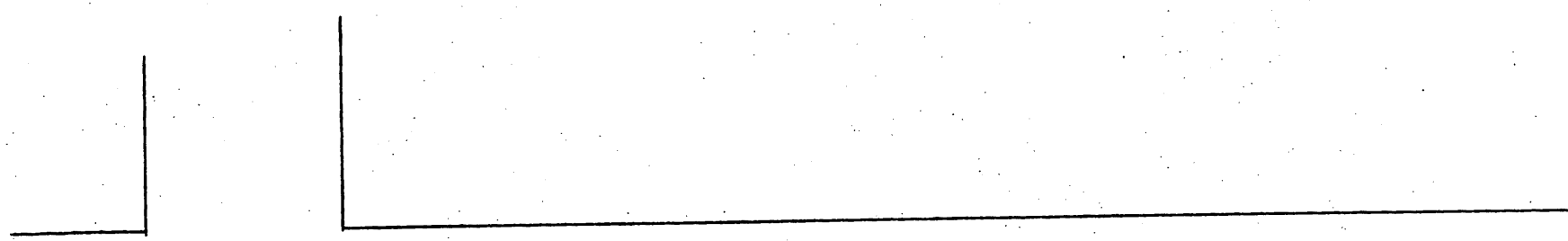


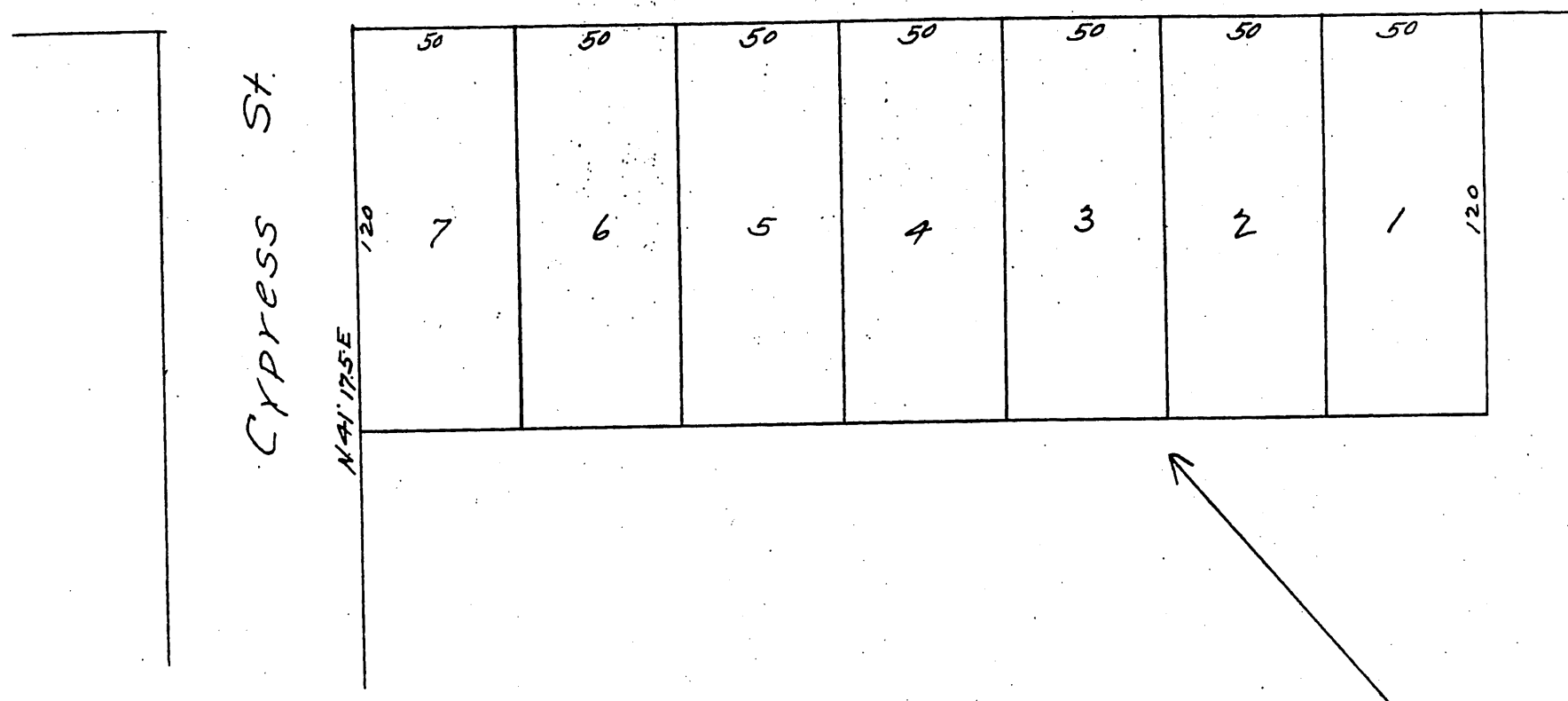
John Case's Subdivision.

o Lot 2, Block 64 Burbank.
Los Angeles County California

Surveyed and Platted February 1888 by Stephens & Miller.
50 ft = 1 inch.



Second Street



A full, true and correct copy of the original,
recorded March 16, 1888 at 54 min past 10 o. m
at request of John Case

Frank K. A. Gibson County Recorder.
By George Bugbee Deputy.