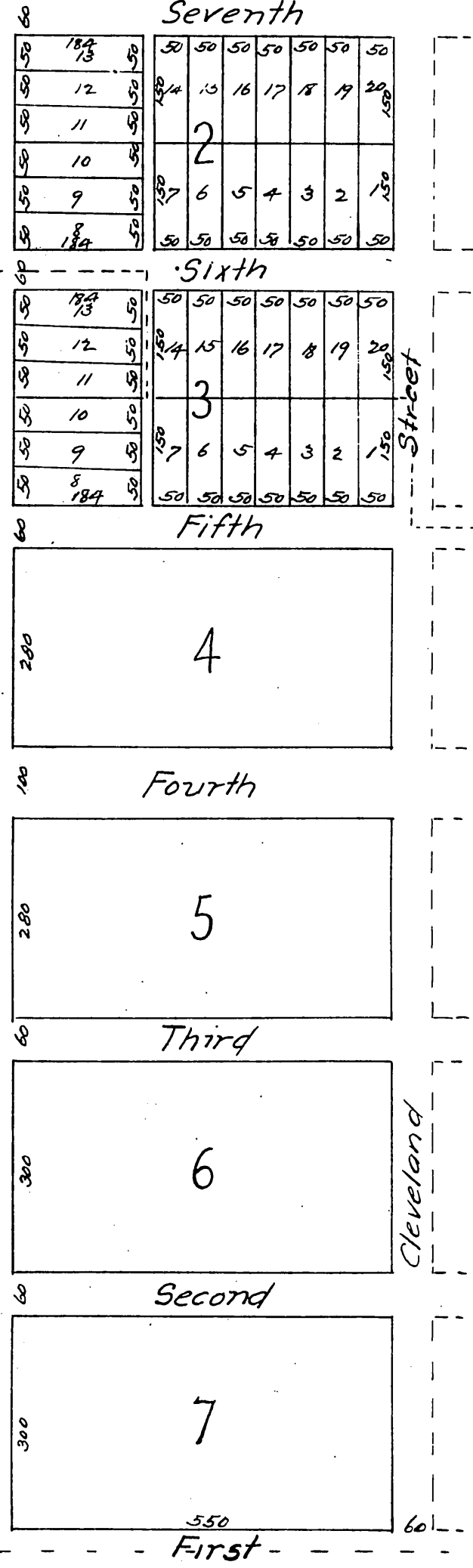


MAP
 of a portion of
Arlington Heights Tract.
 Consisting of a portion of the Gray and Pittman Tracts
 OF
Rancho La Cienega
 Los Angeles Co

Surveyed by H.Y. Harding C.E. February 1888.
 Scale 100 feet to 1 inch.

J. I. Weed, T. Wiesendanger for self and Dan McFarland and
 William H. Bonsall



Sta 3 of Rancho La Cienega