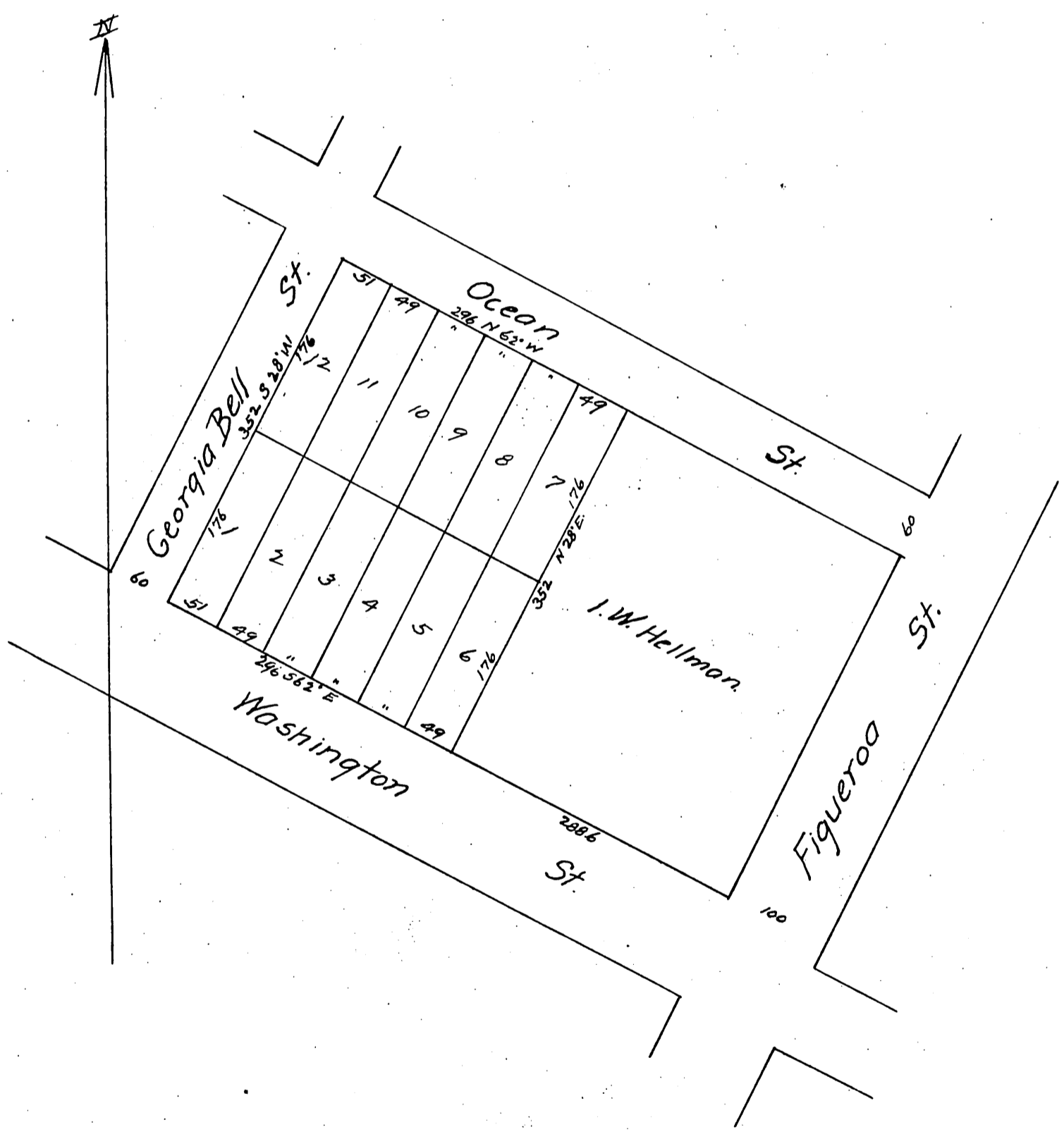


# Robertson's Subdivision of lots 3 & 4 Block 3 of Bells Addition.

Surveyed by P. Le Neve Foster C. E. Los Angeles March 1888.  
Scale 80 feet to one inch.



A full, true and correct copy of the original.  
(reduced to the scale of 120 feet to one inch)  
recorded March 17, 1888 at 55 min past 10 A. M.  
at request of Mrs Frances H. Robertson.

Frank O. Gibson County Recorder.  
By George Bugbee Deputy.