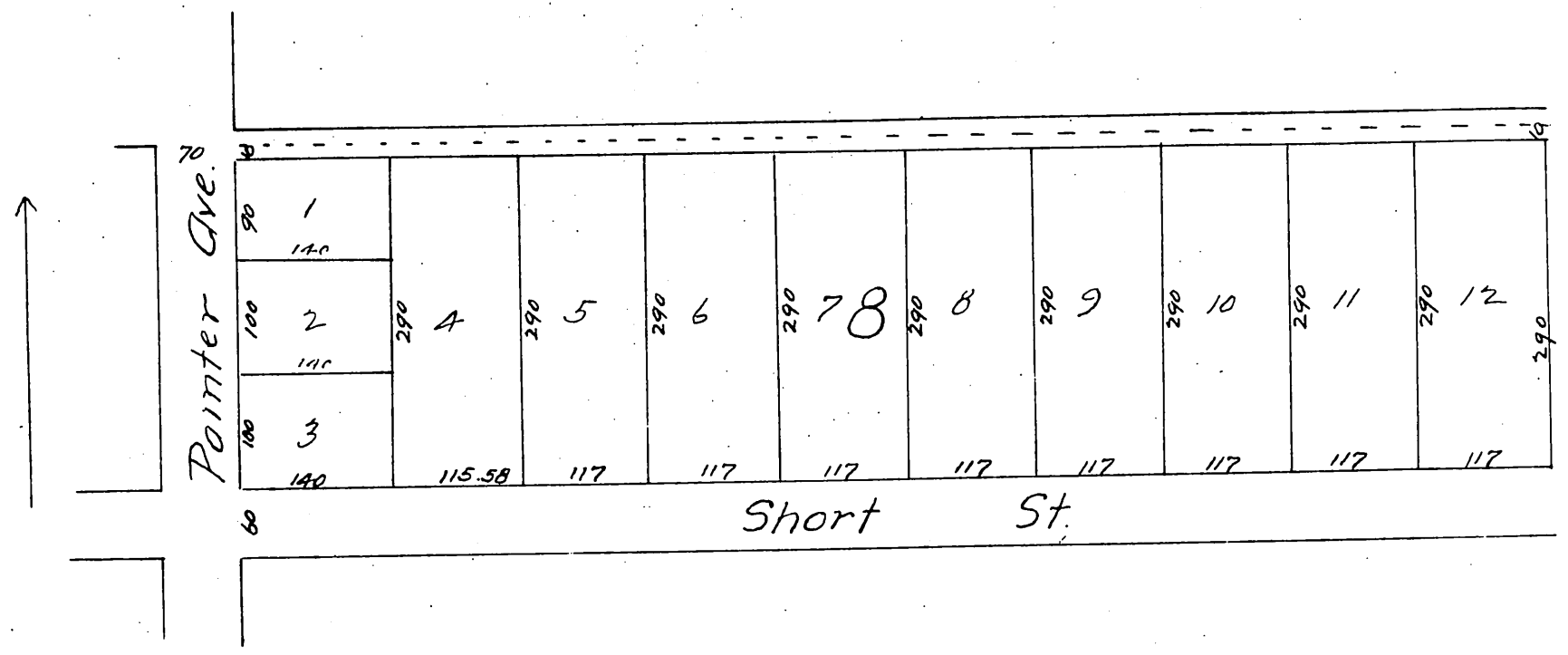


Briggs' Addition to Whittier.

Being a subdivision of Lot 8, Block I of the Pickering Land and Water Company's Subdivision of the John M. Thomas Ranch Los Angeles County Cal.

Surveyed Nov 1887 by Jessup Reeces & Clappitt Surveyors.
Scale 70 feet to 1 inch.



A full, true and correct copy of the original (reduced to the scale of 150 feet to one inch) recorded March 19, 1888 at 1 min past 1 PM. at request of W. P. Briggs

Frank O. Gibson County Recorder.
By George Bugbee Deputy.