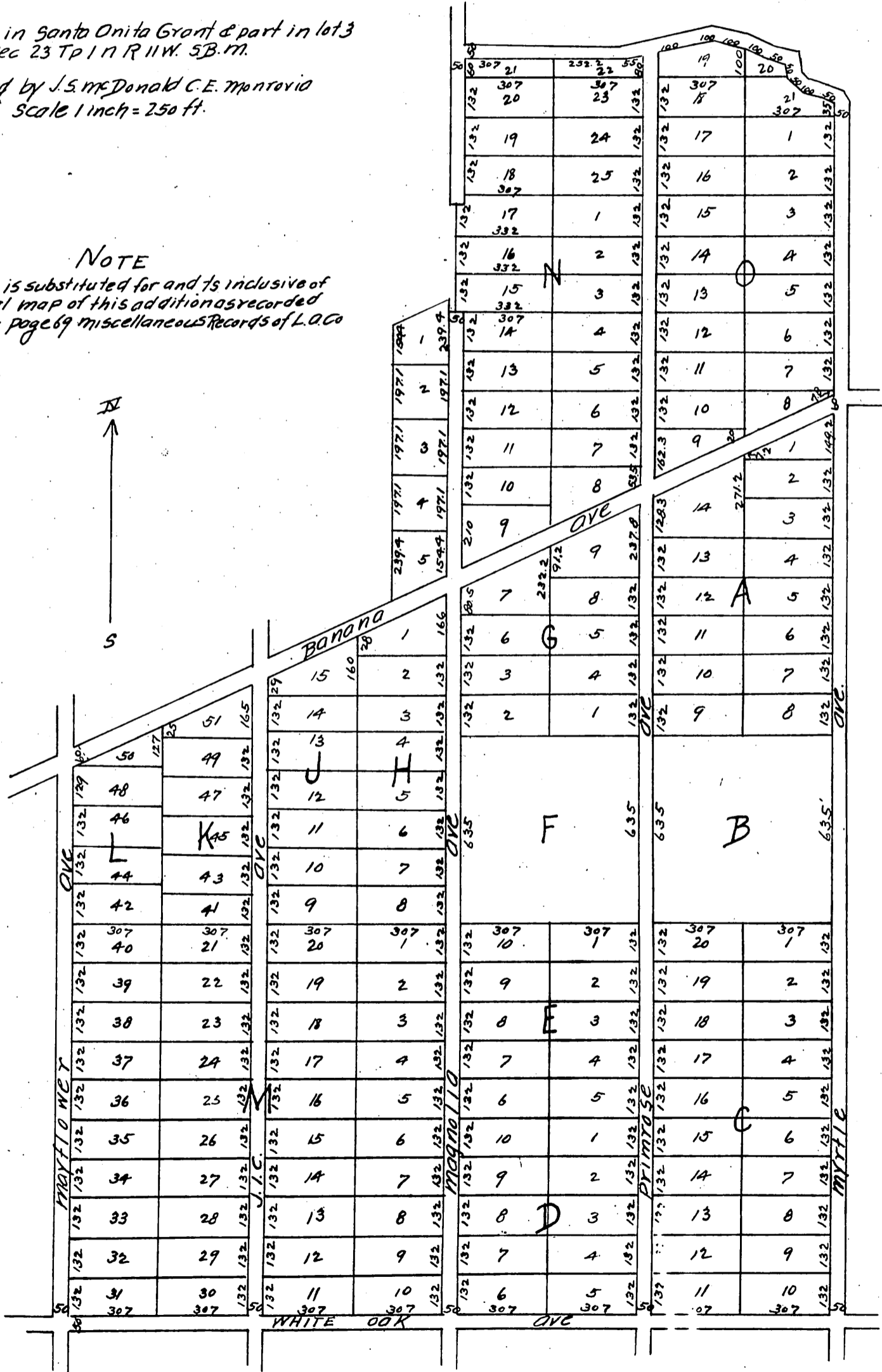


MAP
OF
Monroe Addition
TO
Monrovia Tract
Los Angeles Co Cal.

Part being in Santa Anita Grant & part in lot 3
Sec 23 T1 N R 11 W. S.B.M.

Surveyed by J.S. McDonald C.E. Monrovia
Scale 1 inch = 250 ft.

NOTE
This map is substituted for and is inclusive of
the original map of this addition as recorded
in book 14, page 69 miscellaneous records of L.A.C.



A full true and correct copy of the original
(reduced to the scale of 400 feet to one inch)
recorded March 20, 1888 at 35 min past 10 O.M.
at request of W.N. Monroe.

Frank O. Gibson County Recorder.
By George Bugbee Deputy.