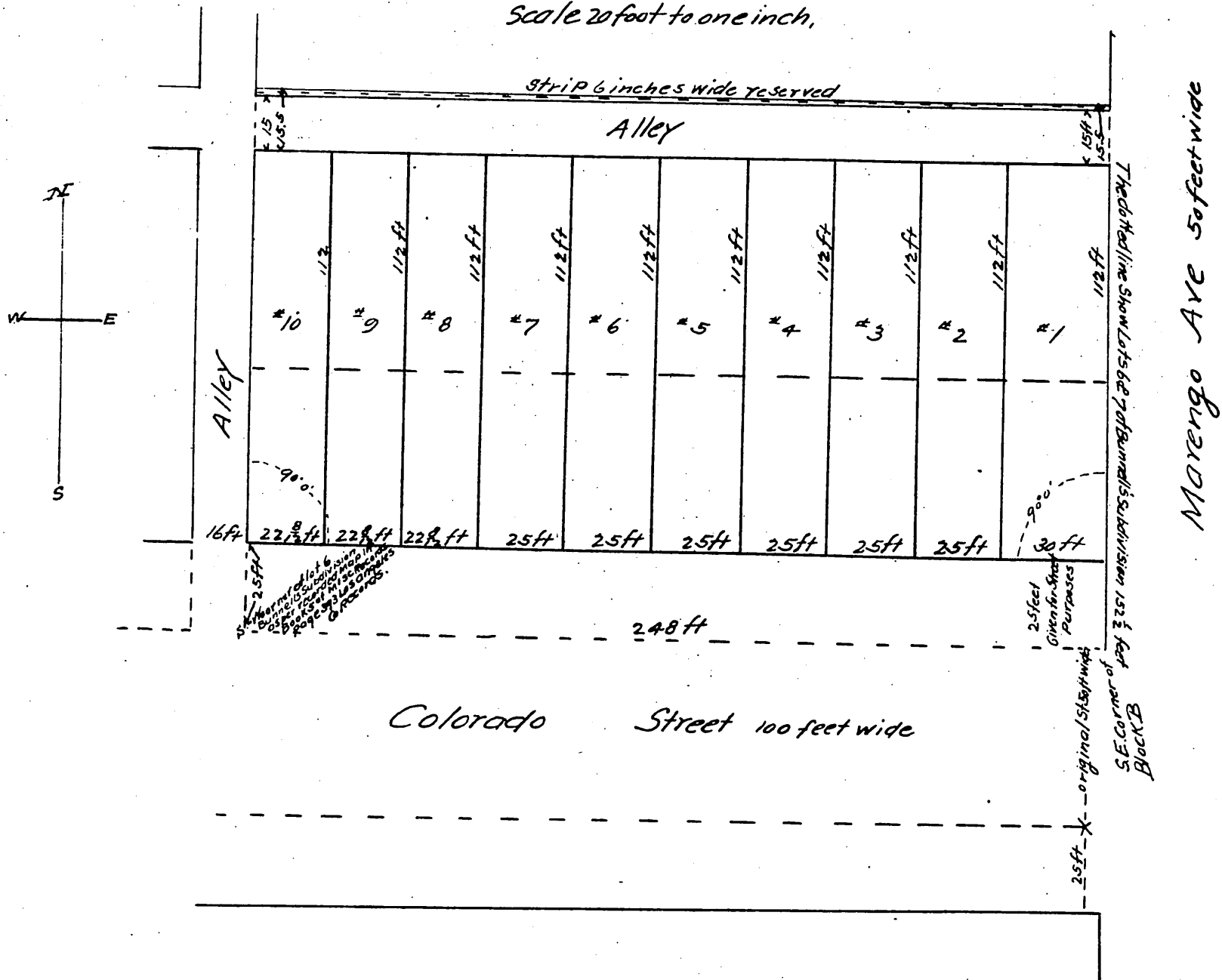


Corrected
MAP
 OF
Frost's Subdivision
 of lots 6 and 7 of Bunnell's Subdivision
 of lot 7^{No} 13, Block B, San Pasqual Tract
 L.V.L. & W.A. s'n situated in the Rancho
 San Pasqual, County of Los Angeles Cal
 Pasadena, Cal.

Scale 20 feet to one inch.



A full, true and correct copy of the original
 (reduced to the scale of 40 feet to one inch)
 recorded March 21, 1888 at 30 min past 11 a m
 at request of Edward S. Frost
 Frank O. Gibson County Recorder
 By George Bugbee Deputy