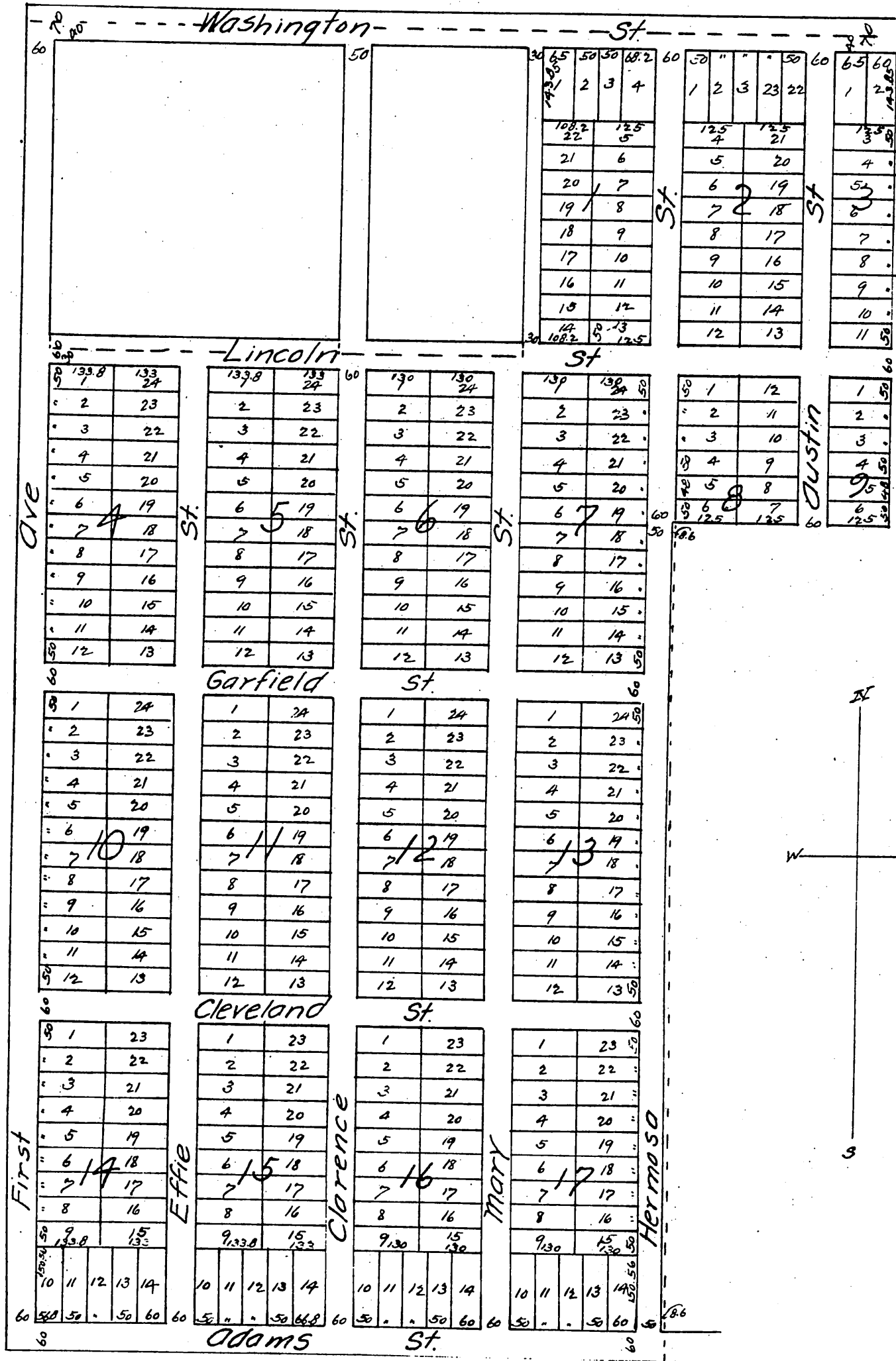


MAP OF THE Menlo Tract.

Being A. C. Shofer's Subdivision of Lots 1, 5, 6, 7, 8, 9, 10, 11, 12,
13, 14, 15 & 16 of the Mardon Tract and the Brandau 10 a.c.
adjoining. Los Angeles Co California

J. L. Sheperd C. E.
Scale 100ft to one inch.



A full, true and correct copy of the original.
(reduced to the scale of 250 feet to one inch)
recorded April 2, 1888 at 39 min past 2 P.M.
at request of A. C. Shofer.

Frank O. Gibson County Recorder.
By George Bugbee Deputy.