



MAP

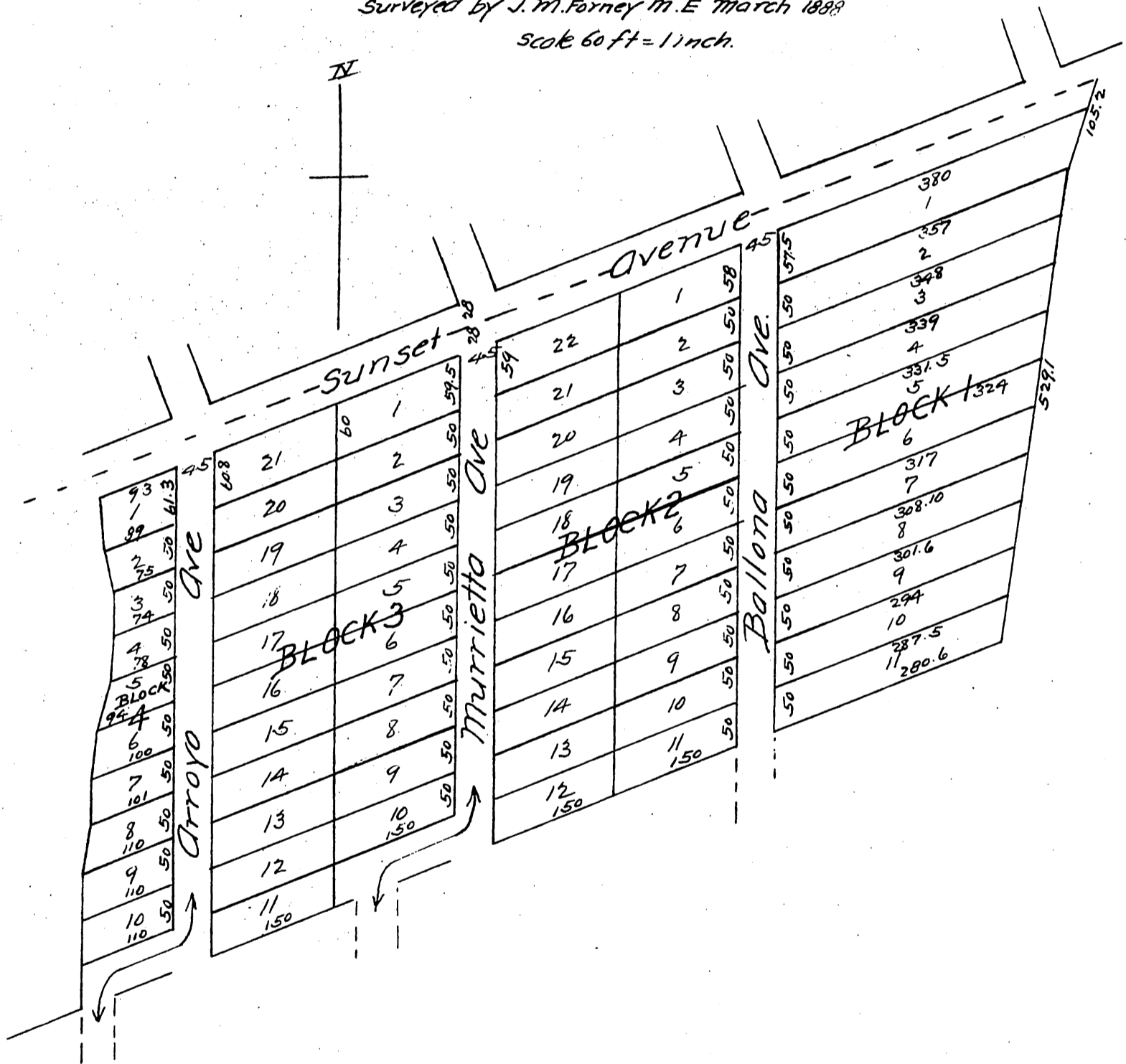
OF THE

Blaise Tract

owned by
Antone and Joe Blaise

Being a Subdivision of East part of the Northernly 30 of the
Southernly 60 acres of Lot 29, Block A San Pasqual Tract
Los Angeles County Cal.

Surveyed by J. M. Forney M. E. March 1888
Scale 60 ft = 1 inch.



A full, true and correct copy of the original
(reduced to the scale of 150 feet to one inch)
recorded April 4, 1888 at 11 min past 11 A.M.
at request of Antone Blaise.

Frank A Gibson County Recorder.
By George Bughe Deputy.