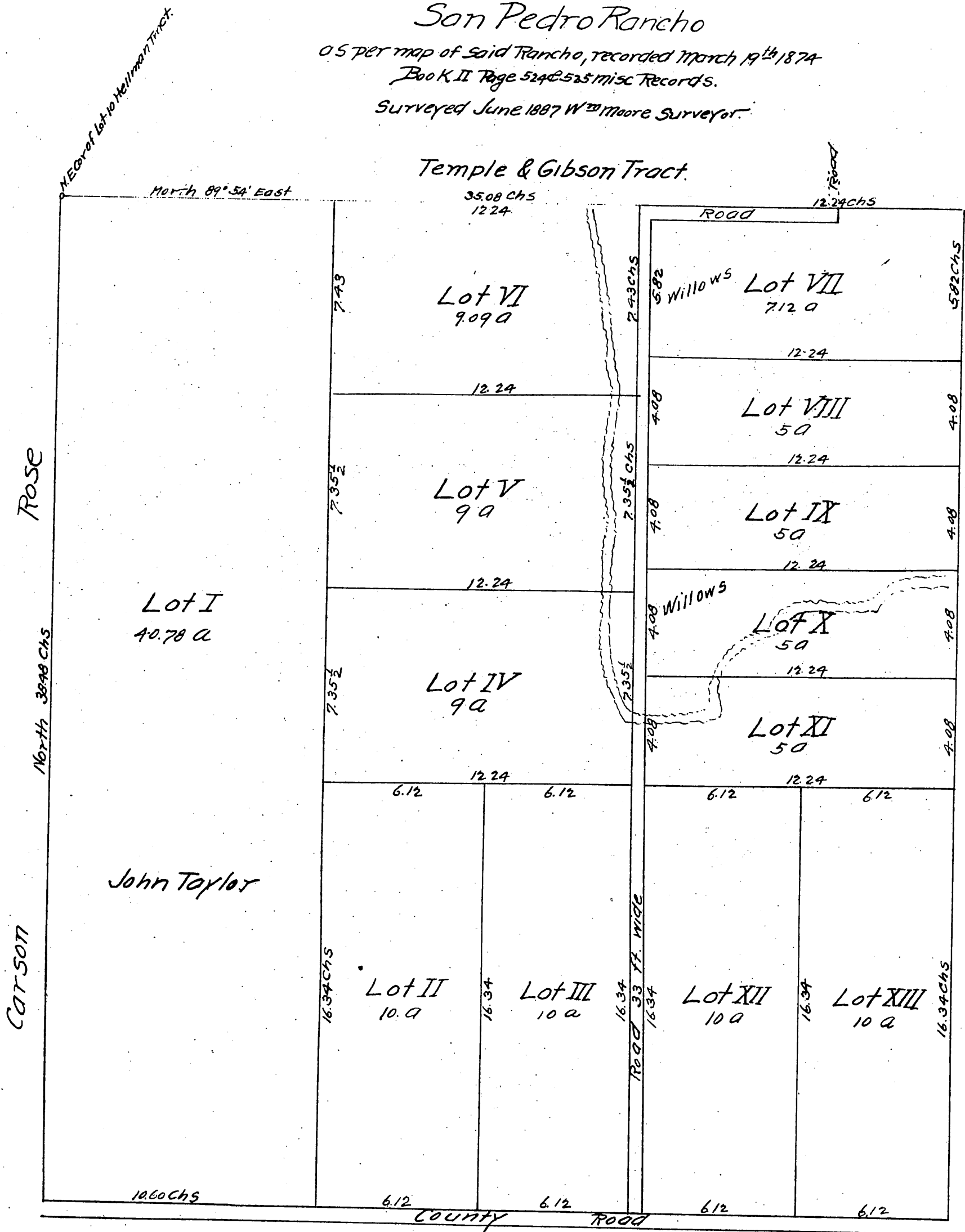


MAP  
OF THE  
**John Taylor Tract**  
the same being a part of the I. W. Hellman subdivision of the  
**Son Pedro Rancho**  
as per map of said Rancho, recorded March 19<sup>th</sup> 1874  
Book II Page 524 & 525 Misc Records.  
Surveyed June 1887 W<sup>m</sup> Moore Surveyor.



A full, true and correct copy of the original  
recorded April 4, 1888 at 6 min past 3 P.M.  
at request of John Taylor.  
Frank A Gibson County Recorder.  
By George Bugbee Deputy.