

MAP

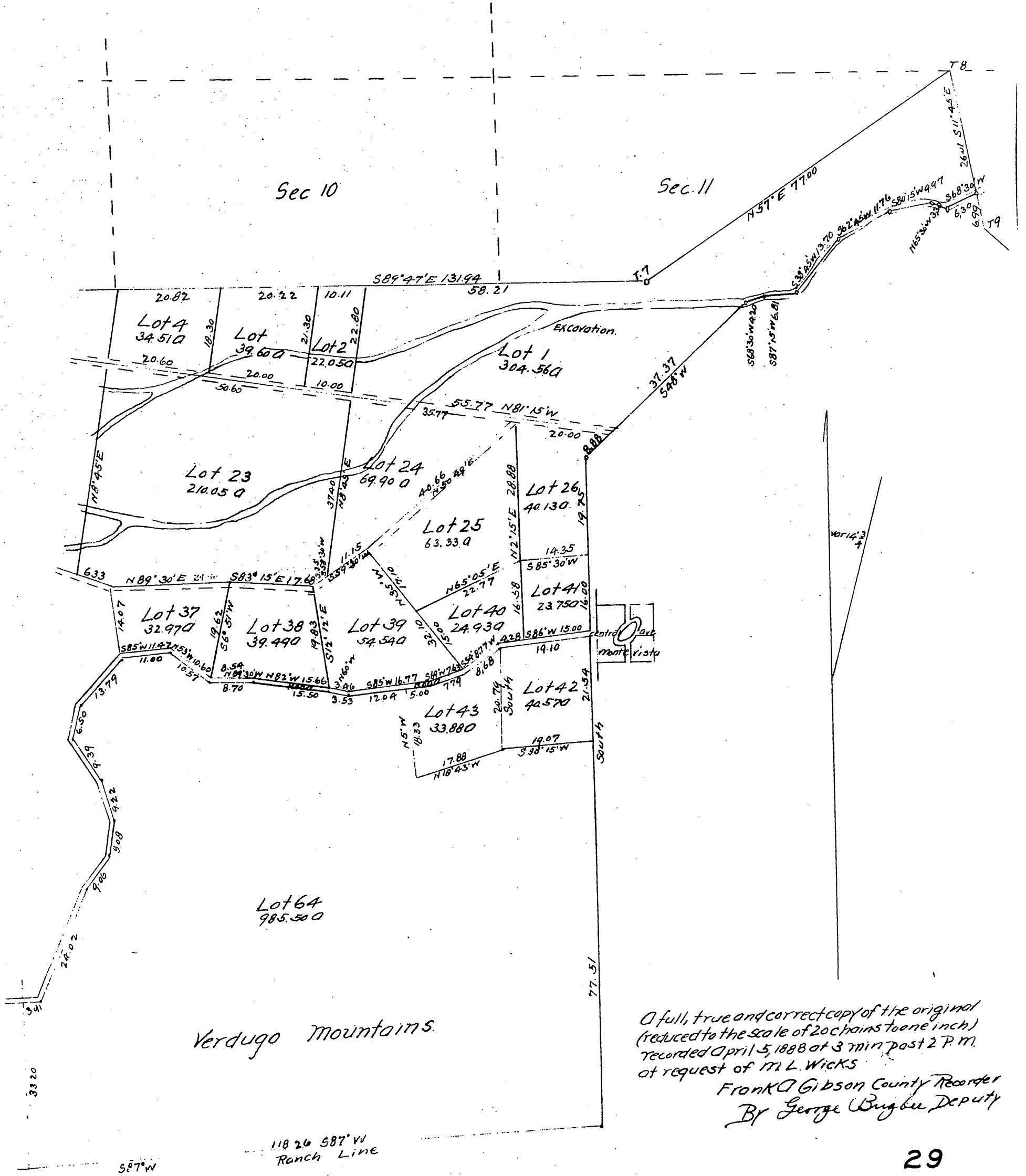
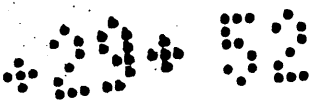
of the West portion of
Tujunga Ranch.

Los Angeles Co. California.

Subdivided at request of M. L. Wicks Esq. by B. Bassell.

Scale 10 chains to 1 inch.





A full, true and correct copy of the original
 (reduced to the scale of 20 chains to one inch)
 recorded April 5, 1888 at 3 min past 2 P.M.
 at request of M. L. Wicks
 Frank Gibson County Recorder
 By George Bugbe Deputy