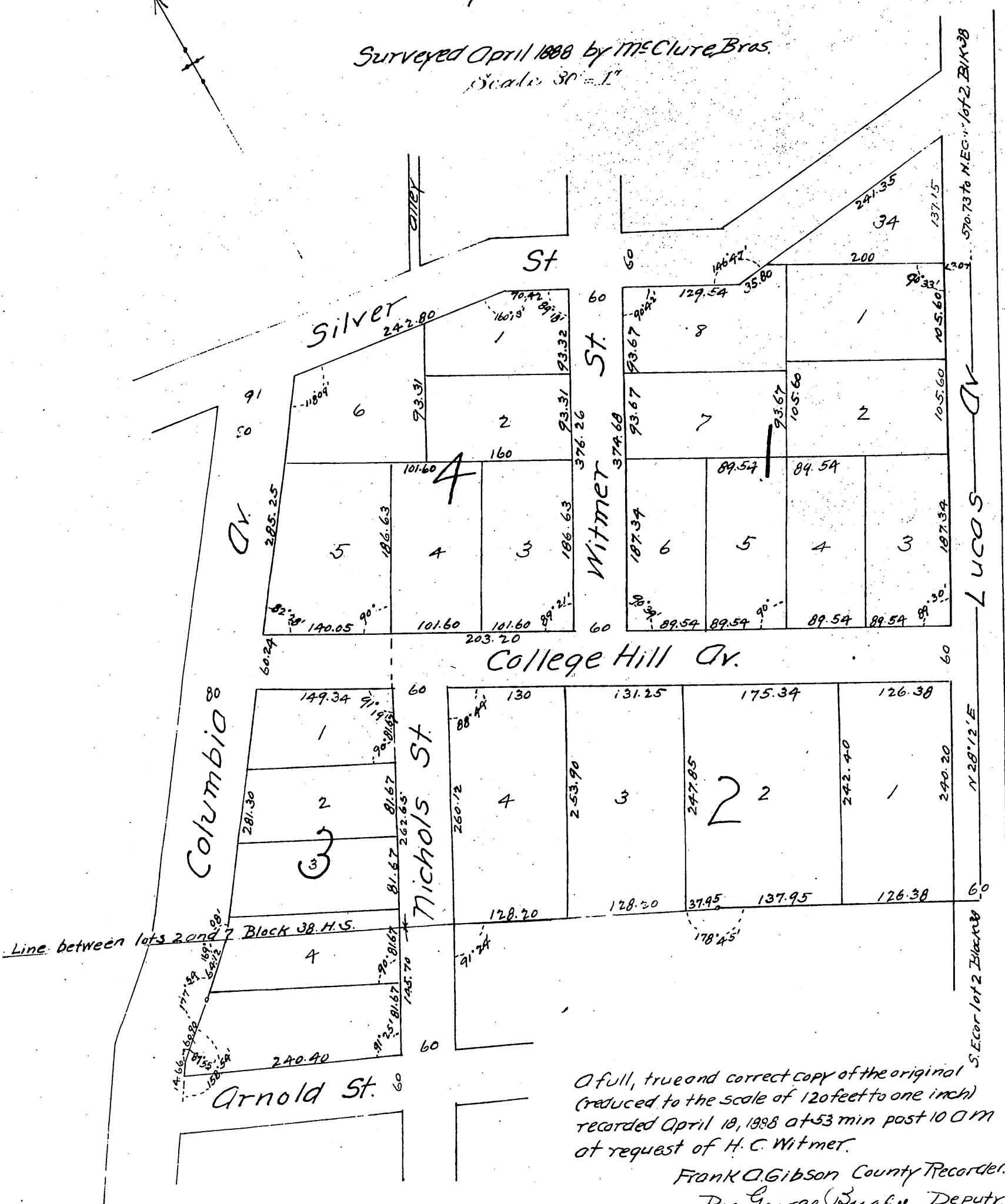


MAP

OF
Witmers' Subdivision
 of parts of Lots 2 and 7, Block 38
 Hancock's Survey
 City of Los Angeles Cal.

Surveyed April 1888 by McClure Bras.
 Scale 30' = 1"



A full, true and correct copy of the original
 (reduced to the scale of 120 feet to one inch)
 recorded April 18, 1888 at 53 min past 10 O' M
 at request of H. C. Witmer.

Frank O. Gibson County Recorder.
 By George Bugbe, Deputy.