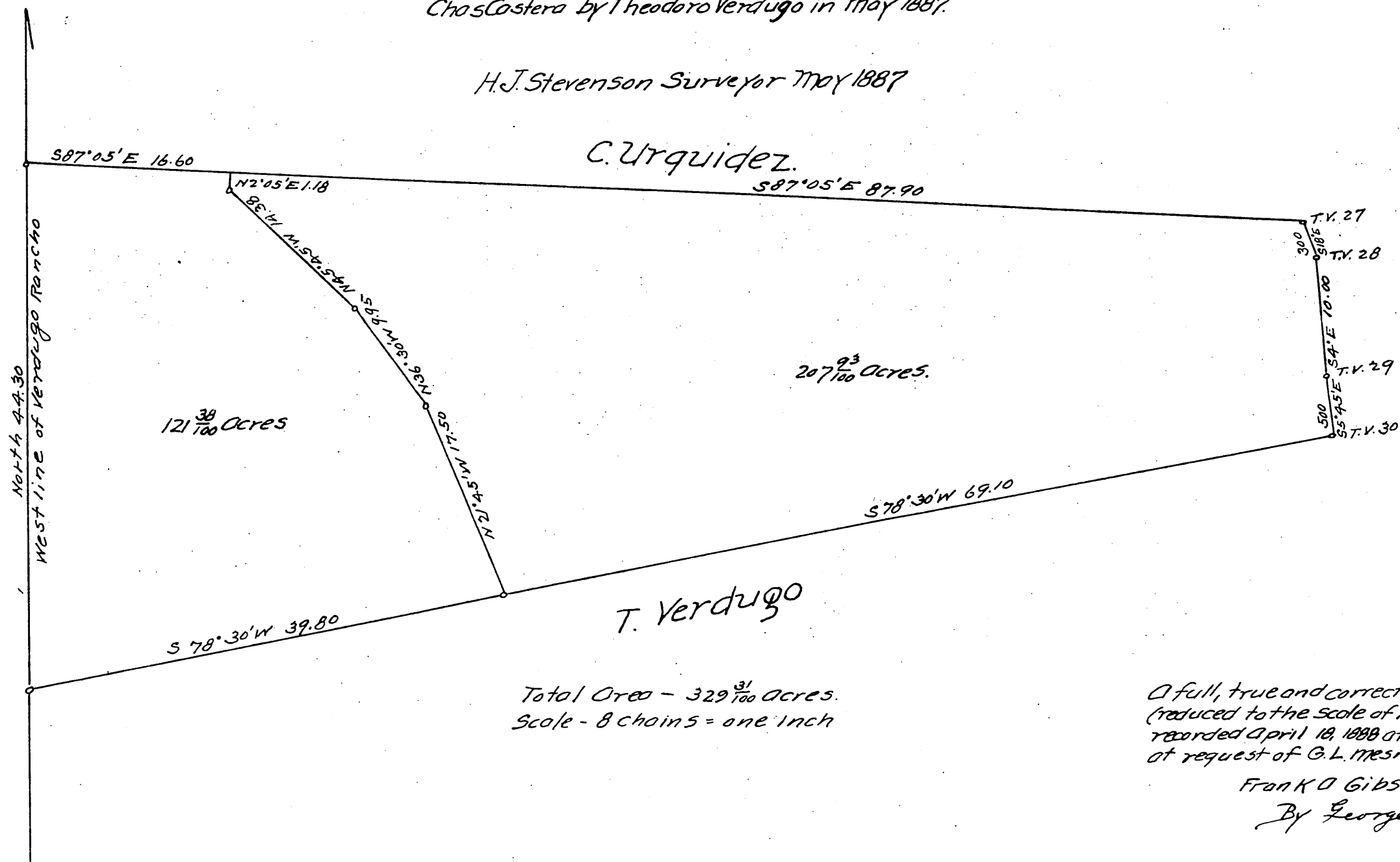


MAP

of a part of the
Theodoro Verdugo Rancho

Being that part conveyed to G.L. Mesnager and
Chas Castera by Theodoro Verdugo in May 1887.

H.J. Stevenson Surveyor May 1887



A full, true and correct copy of the original.
(reduced to the scale of 10 chs to one inch)
recorded April 18, 1888 at 5 min past 3 P.M.
at request of G.L. Mesnager and C. Castera

Frank O. Gibson County Recorder.

By George Pugh Deputy.