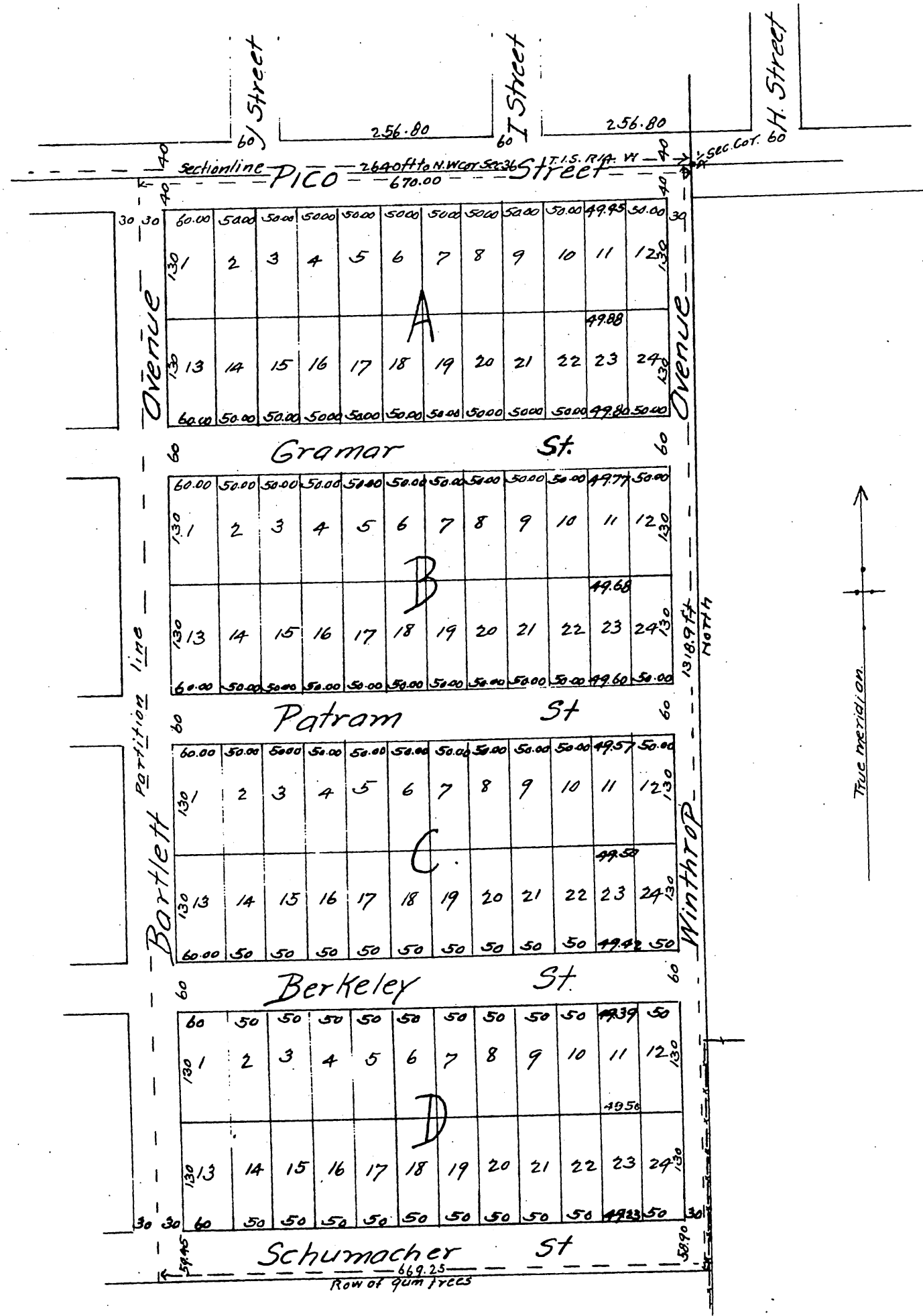


Krutz^{and} Bradshaw's Subdivision of the Schumacher Tract

Being a subdivision of the Easterly part of the NE $\frac{1}{4}$
of the NW $\frac{1}{4}$ of Sec 36, T. 15. R. 14 W. S.B.M.

Surveyed in Sept, 1887 by J. H. Dockweiler.



Scale 100 feet to one inch.

A full, true and correct copy of the original
(reduced to the scale of 150 feet to one inch)
recorded April 29, 1888 at 4 min Past 3 P.M.
at request of W. G. Bradshaw.
Frank O. Gibson County Recorder.
By George Bugbee Deputy. 29