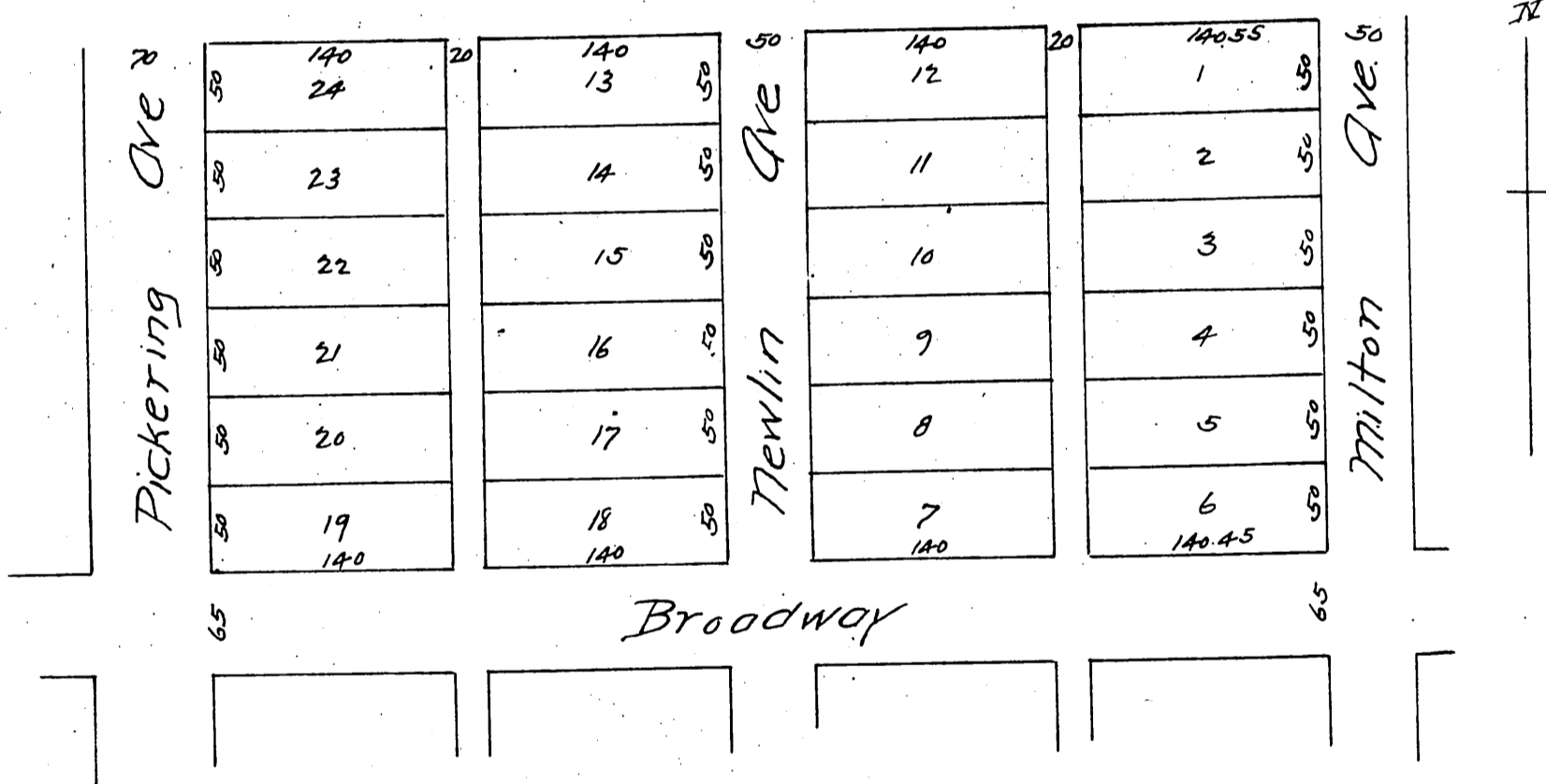


Vernon's Addition to Whittier

Being a subdivision of Lot 13, Block C, of the Pickering Land and Water Company's Subdivision of the John M. Thomas Ranch Los Angeles County Cal.

Surveyed Oct 1887 by Jessup & Reece Surveyors
Scale 50 feet to one inch



A full, true and correct copy of the original,
(reduced to the scale of 100 feet to one inch)
recorded April 24, 1888 at 8 min past 12 M
at request of W. O. Vernon

Frank Q. Gibson County Recorder
By George P. Buzbee Deputy.