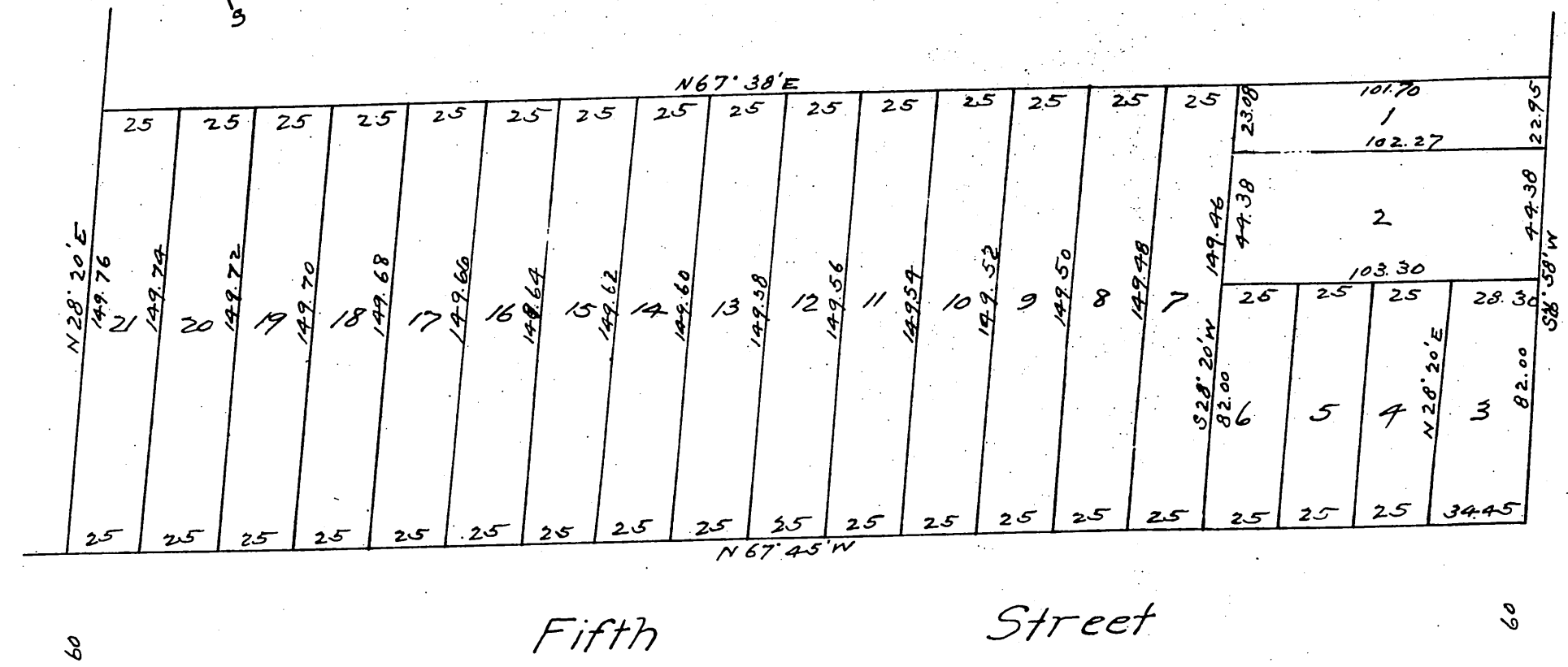
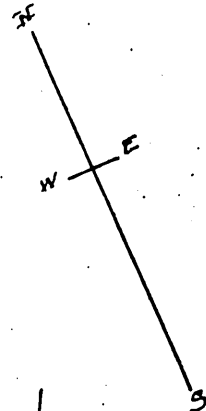


MAP

OF THE
Alfred James Tract.
Los Angeles City, Cal.

Surveyed July 1887 by E. T. Wright.
Scale 50 ft to one inch.



90 San Pedro St. 90

A full, true and correct copy of the original
 recorded April 26 1888 at 34 min past 4 P. M.
 at request of O. E. Pomeroy
 Frank A. Gibson County Recorder.
 By George Bugbee Deputy.