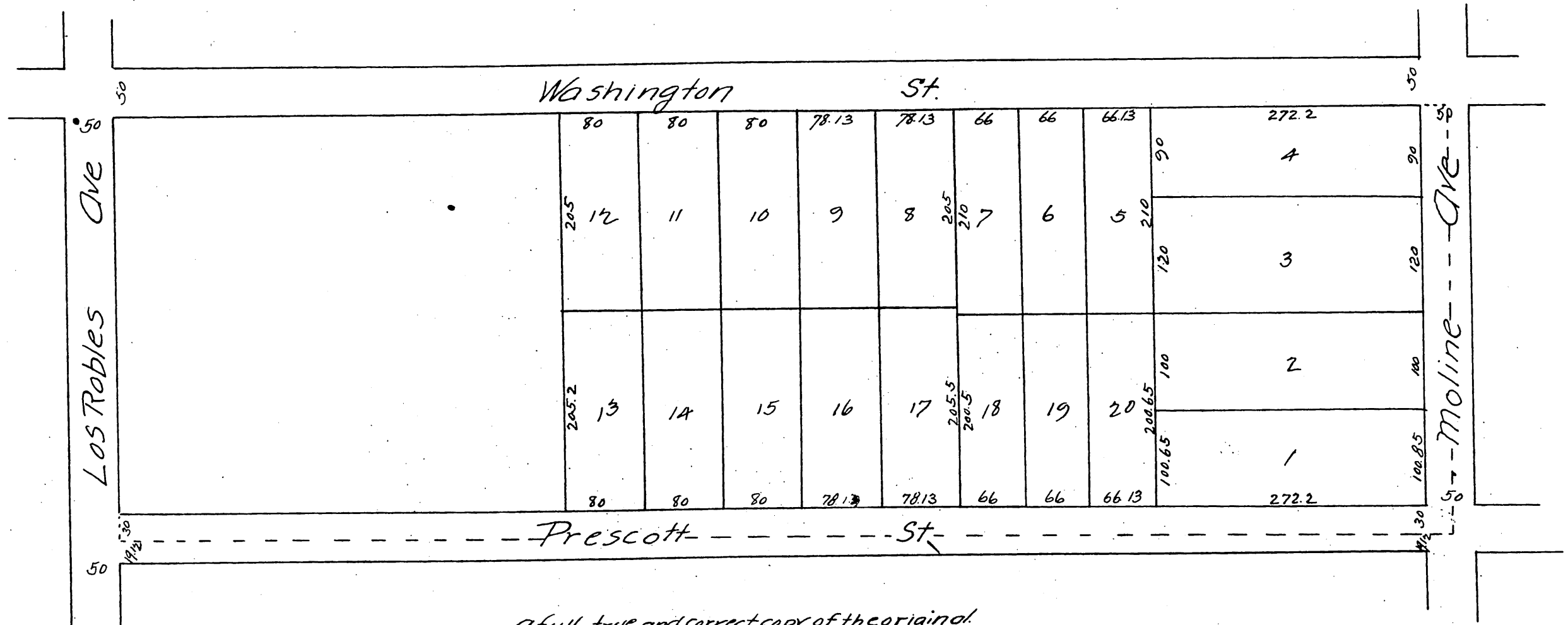


# MAP OF THE James Ball Tract

Being a subdivision of the north west part of Block 5  
of the Pointer & Ball Tract Pasadena California

Surveyed April 1888 by W. E. Mount C. E.  
Scale 100ft to one in.



A full, true and correct copy of the original.  
(reduced to the scale of 120 feet to one inch)  
recorded April 28, 1888 at 10 min past 11 A.M.  
at request of Lyman Allen.  
Frank O. Gibson County Recorder.  
By George Bugbee Deputy.

