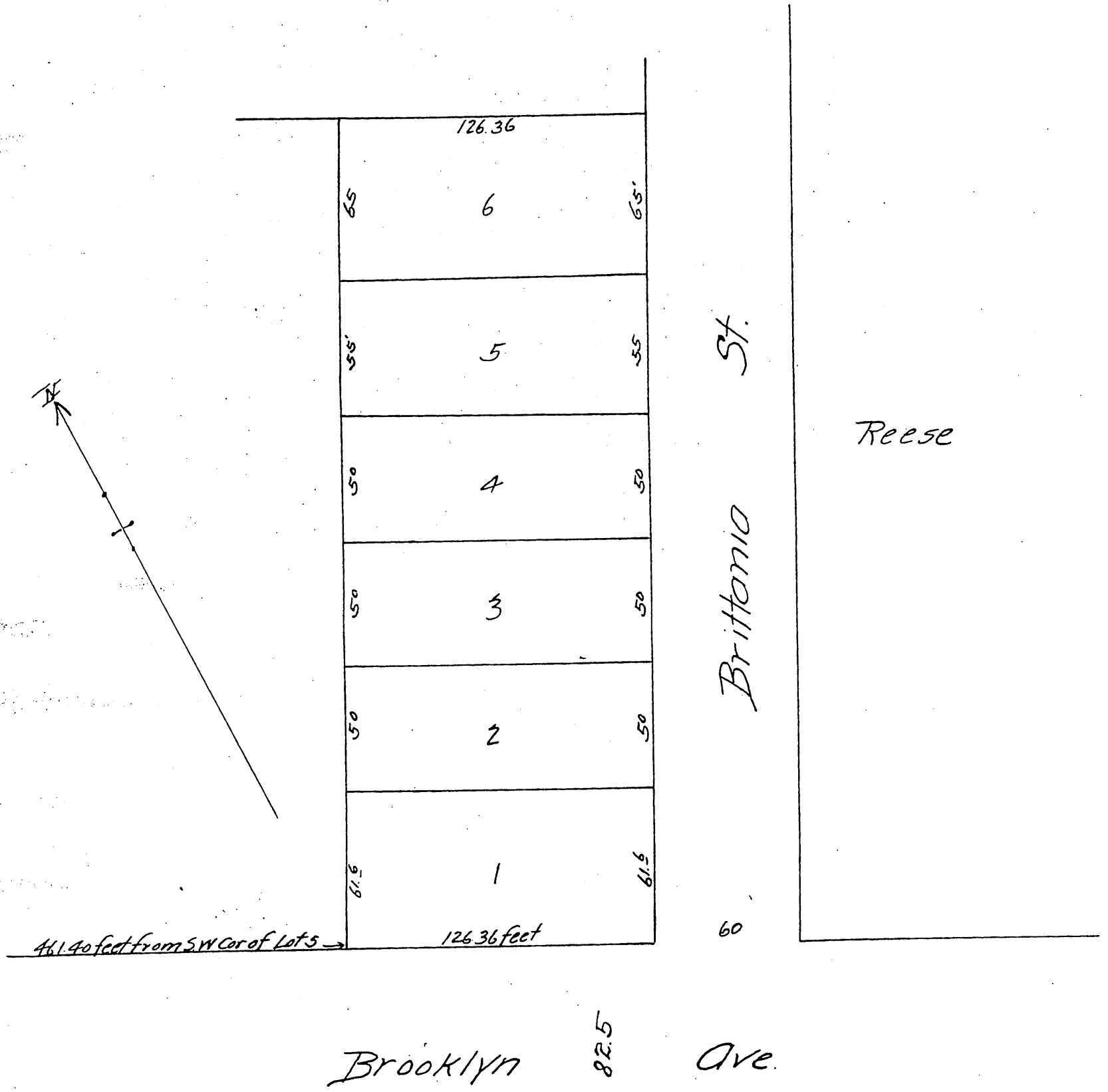


MAP  
 OF  
 Squire's Subdivision  
 of a part of Lot 5, Block 61, Hancock Survey  
 Los Angeles Cal.

Q.R. Street Del. May 1888.  
 Scale 50ft per inch.



A full, true and correct copy of the original.  
 recorded May 3, 1888 at 24 min. past 9 o. m.  
 at request of Wm Squires  
 Frank O Gibson County Recorder.  
 By George Bugbee Deputy.