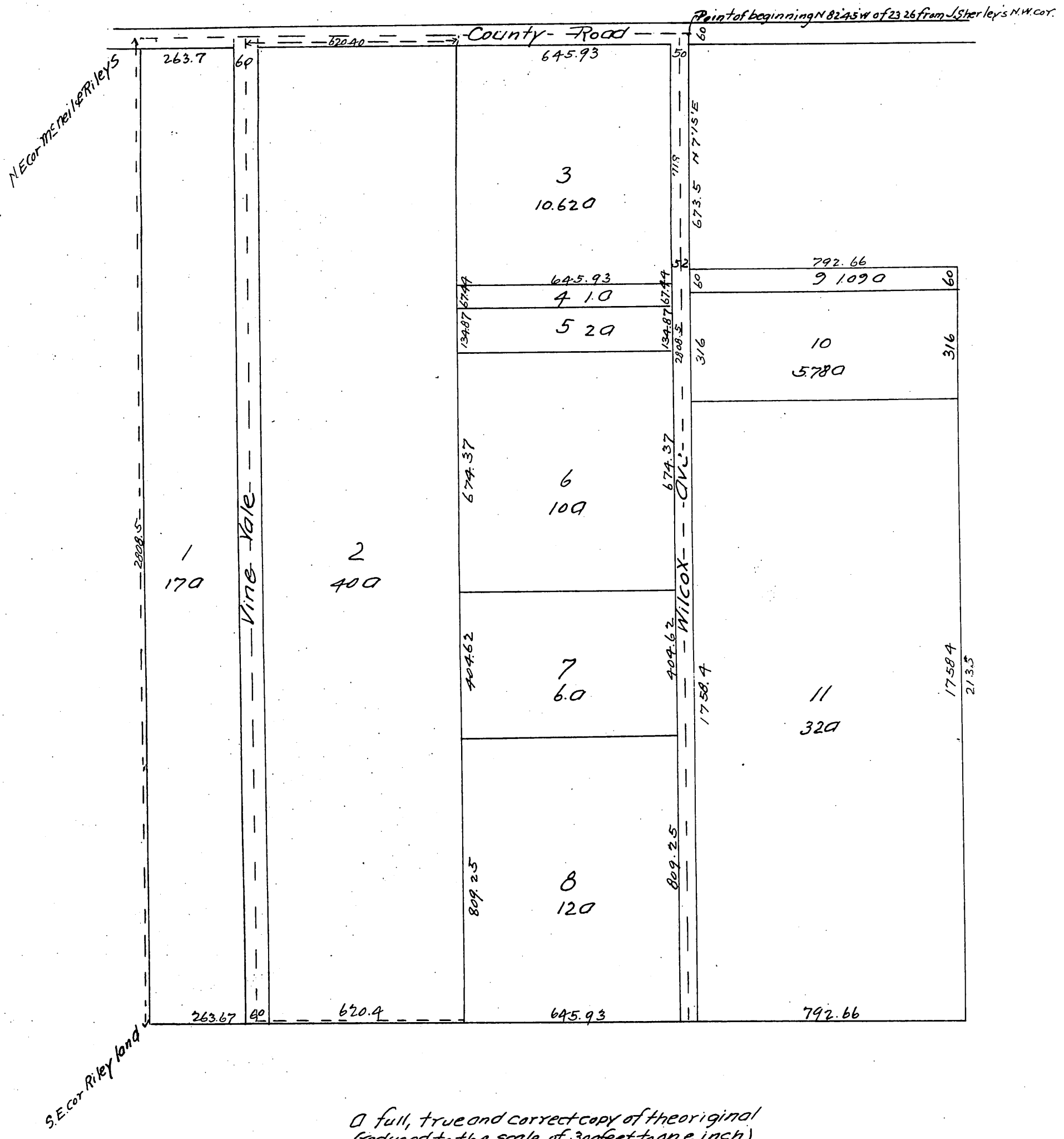


Steele Ranch Subdivision

George Bell Surveyor.
Scale 1" = 200'

Abel Stearns



A full, true and correct copy of the original
(reduced to the scale of 30 feet to an inch)
recorded May 5, 1888 at 39 min past 11 A.M.
at request of M. F. Steele

Frank A. Gibson County Recorder.
by George Bugbee Deputy.