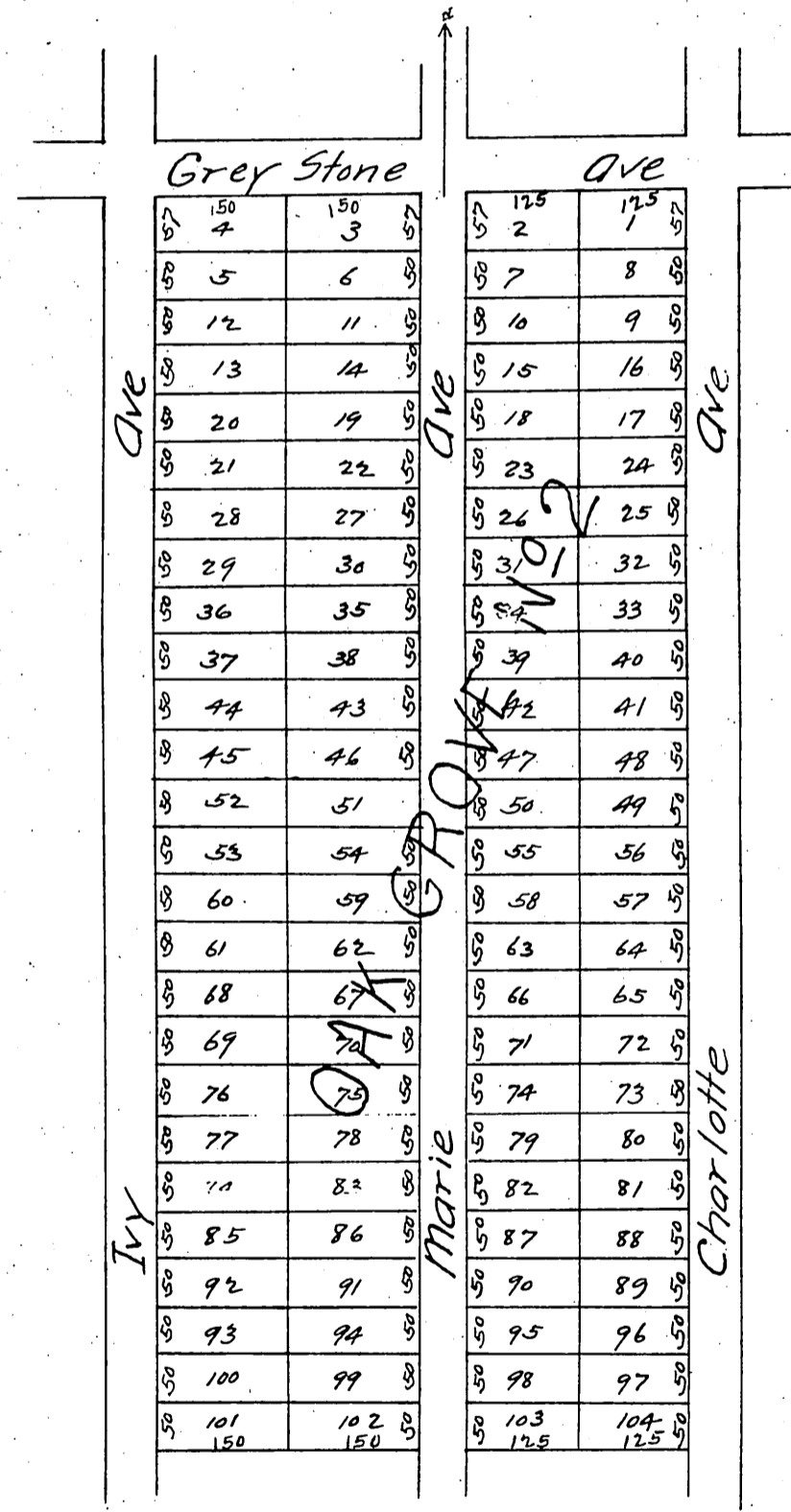


J. S. Keefer's Oak Grove No 2
 Being a Subdivision of N 200 of Lot 70 Santa Anita Rancho.
 L. A. Co. Cal.

Surveyed by Charters & McDonald Montevia.
 Scale 200 ft = 1 inch.



A full, true and correct copy of the original
 recorded May 5, 1888 at 54 min past 3 P. M.
 at request of J. S. Keefer.
 Frank O. Gibson County Recorder
 By George Bugbee Deputy.