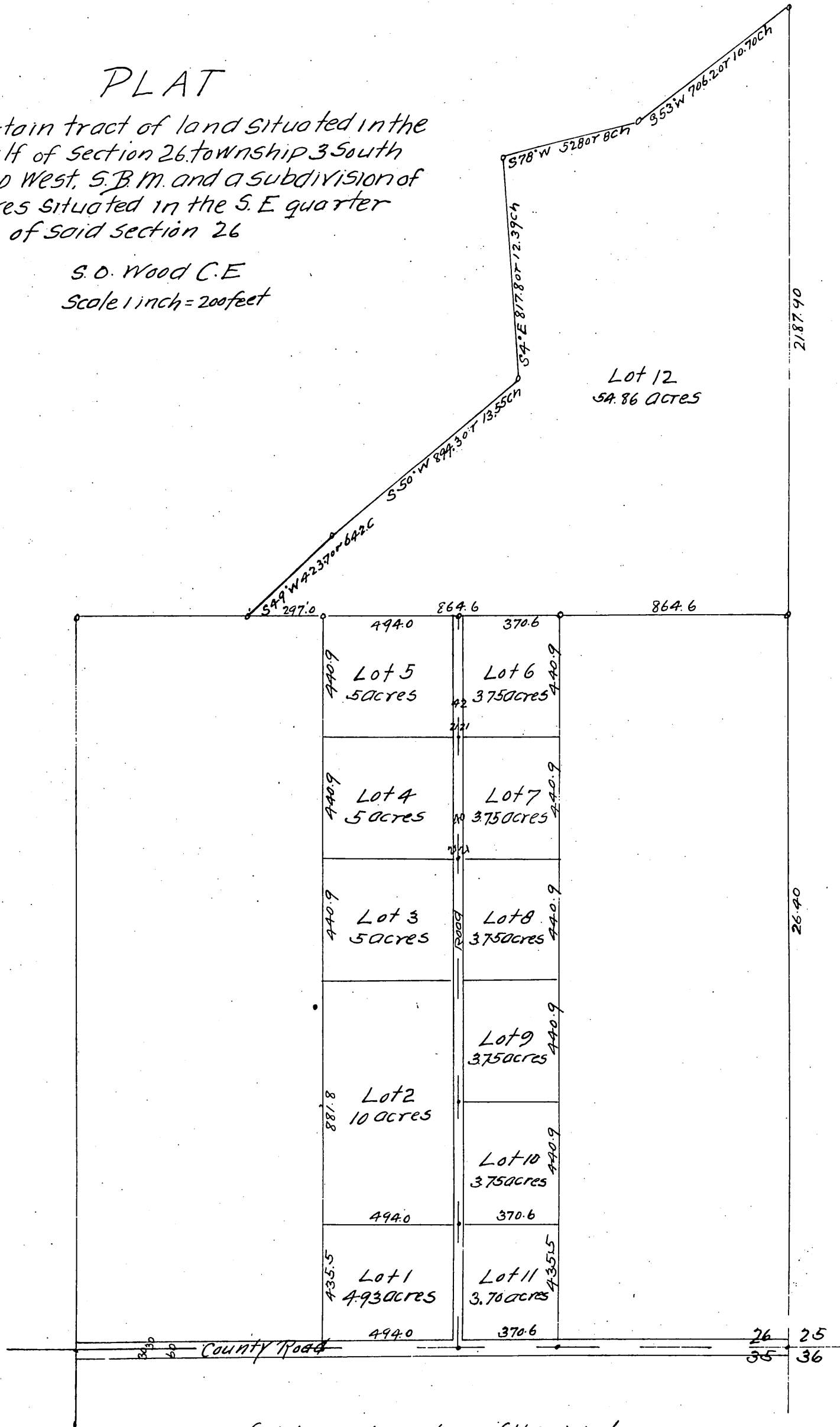




PLAT

of a certain tract of land situated in the east half of section 26 township 3 South range 10 West, S.B.M. and a subdivision of 52.4 acres situated in the S.E. quarter section of said section 26

S.O. Wood C.E.
Scale 1 inch = 200 feet



A full, true and correct copy of the original (reduced to the scale of 400 ft to one inch) recorded May 9, 1888 at 9 min past 10.00 AM at request of R. J. Northam

Frank A. Gibson County Recorder
By George Bungee Deputy.