

MAP OF THE Denison Tract Los Angeles City, Cal.

Surveyed in October & November 1887 by J. H. Dockweiler.
Scale 100 feet to one inch.

- Mrs M. O. Denison
Block O Lots 9, 10, 11, 8 South 1/2 of 7
" B " 12, 3, 12, 9, 10, 11, 20, 21, 22, 19
" C " 1, 3, 4, 5, 10, 11, 12
" D " 3, 4, 5, 7, 8, 10, 11, 19, 17, 20, 21

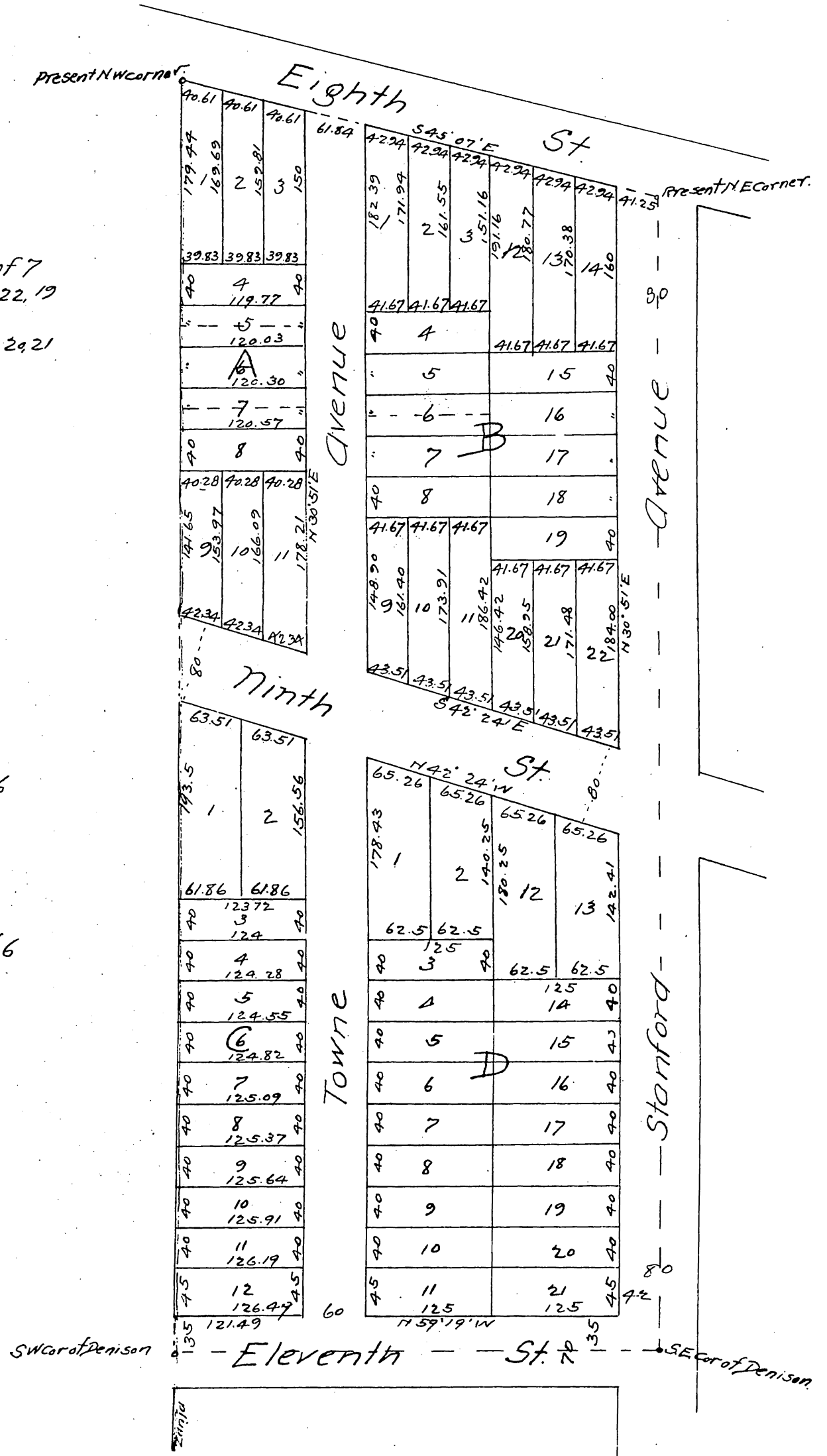
F. E. Denison
Block O Lots 1, South 1/2 of 5
" B " 8, 18
" C " 8
" D " 13, 9

- H. M. Denison
Block O Lots 3, North 1/2 of 5
" B " 4, 15
" C " 9
" D " 2, 16

S. J. Denison
Block O Lots 2
" B " 7, 16, South 1/2 of 6
" C " 6
" D " 1, 15

S. M. Denison
Block O Lots 4
" B " 14, 5, North 1/2 of 6
" C " 7
" D " 12, 18

W. L. Denison
Block O Lots 6 North 1/2 of 7
" B " 13, 17
" C " 2
" D " 6, 14



A full, true and correct copy of the original
reduced to the scale of 120 feet to one inch
recorded May 9 1888 at 20 min past 11 O. M
at request of Stephen M. White
Frank A. Gibson County Recorder.
by George Bugbee Deputy.