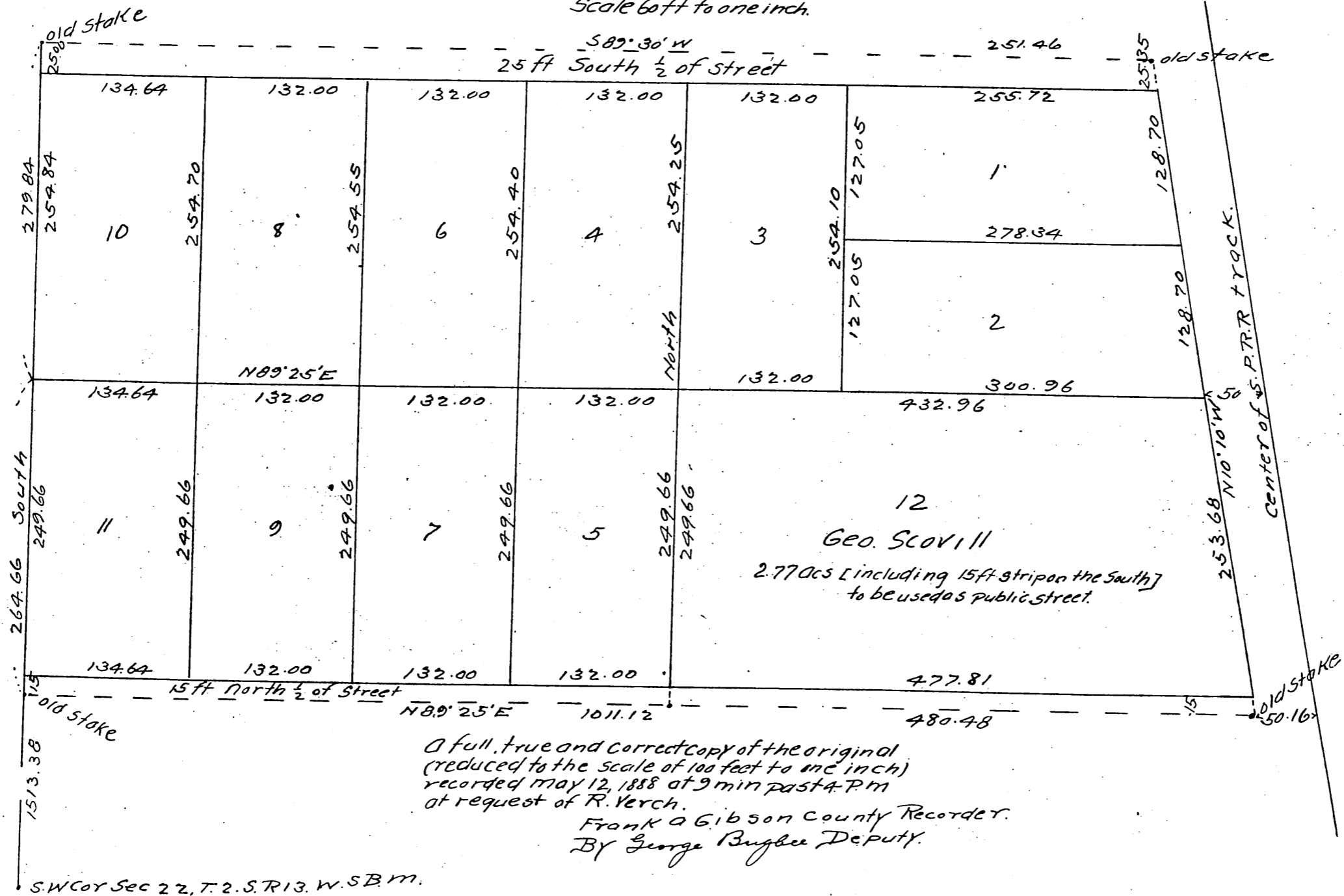


MAP  
of the subdivision of  
**E. B. Grandin's**  
12 acre piece near Florence  
Being a portion of the S.W. 1/4 of Sec 22 T. 2. S. R. 13 W. S. B. M.

Surveyed May 1888 by Wright and Nicholson.  
Scale 60 ft to one inch.



A full, true and correct copy of the original  
(reduced to the scale of 100 feet to one inch)  
recorded May 12, 1888 at 9 min past 4 P.M.  
at request of R. Verch.  
Frank A. Gibson County Recorder.  
By George Bugbee Deputy.

S.W. Cor Sec 22, T. 2. S. R. 13. W. S. B. M.