

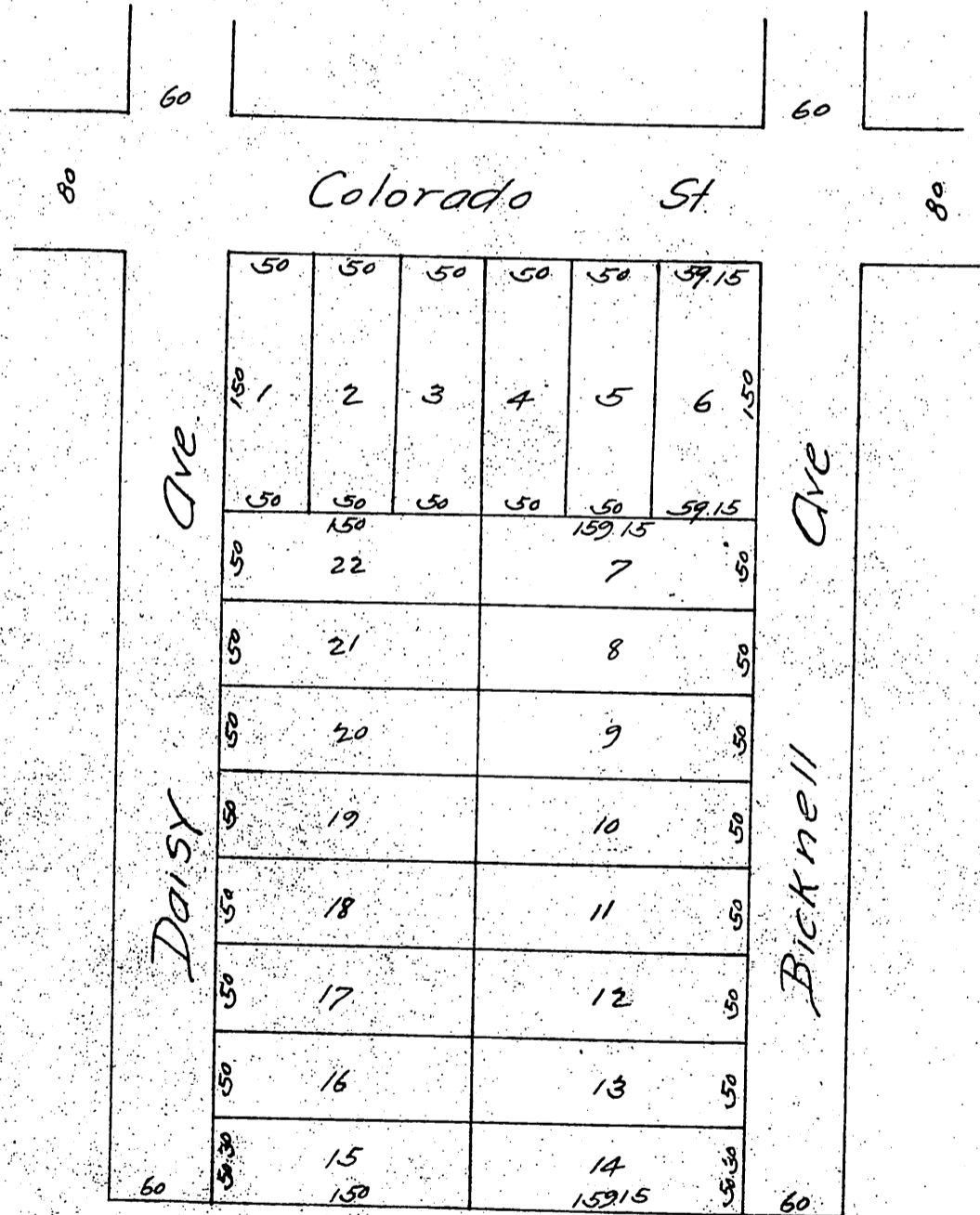


MAP OF Sewall's Subdivision

Lot 2, Block 16 Lamanda Park
as per map recorded Book 7, Page 38, Mis Rec.
Los Angeles Co California.

Surveyed 1887 by J. Norton C. E.
Scale 60ft = 1 in.

This map is re-recorded to correct error in former record.



Recorded at request of S. K. Sewall, May 12, 1887
at 40 min Past 10 a. m. in Book 16, page 97 of
Miscellaneous, Los Angeles County Records
Frank O. Gibson County Recorder.
By Geo Bugbee, Deputy.

A full true and correct copy of the original
Recorded May 16, 1888 at 50 min Past 10 a. m.
at request of S. K. Sewall
(Reduced to the scale of 100 feet to one inch)
Frank O. Gibson County Recorder.
By George Bugbee Deputy.