

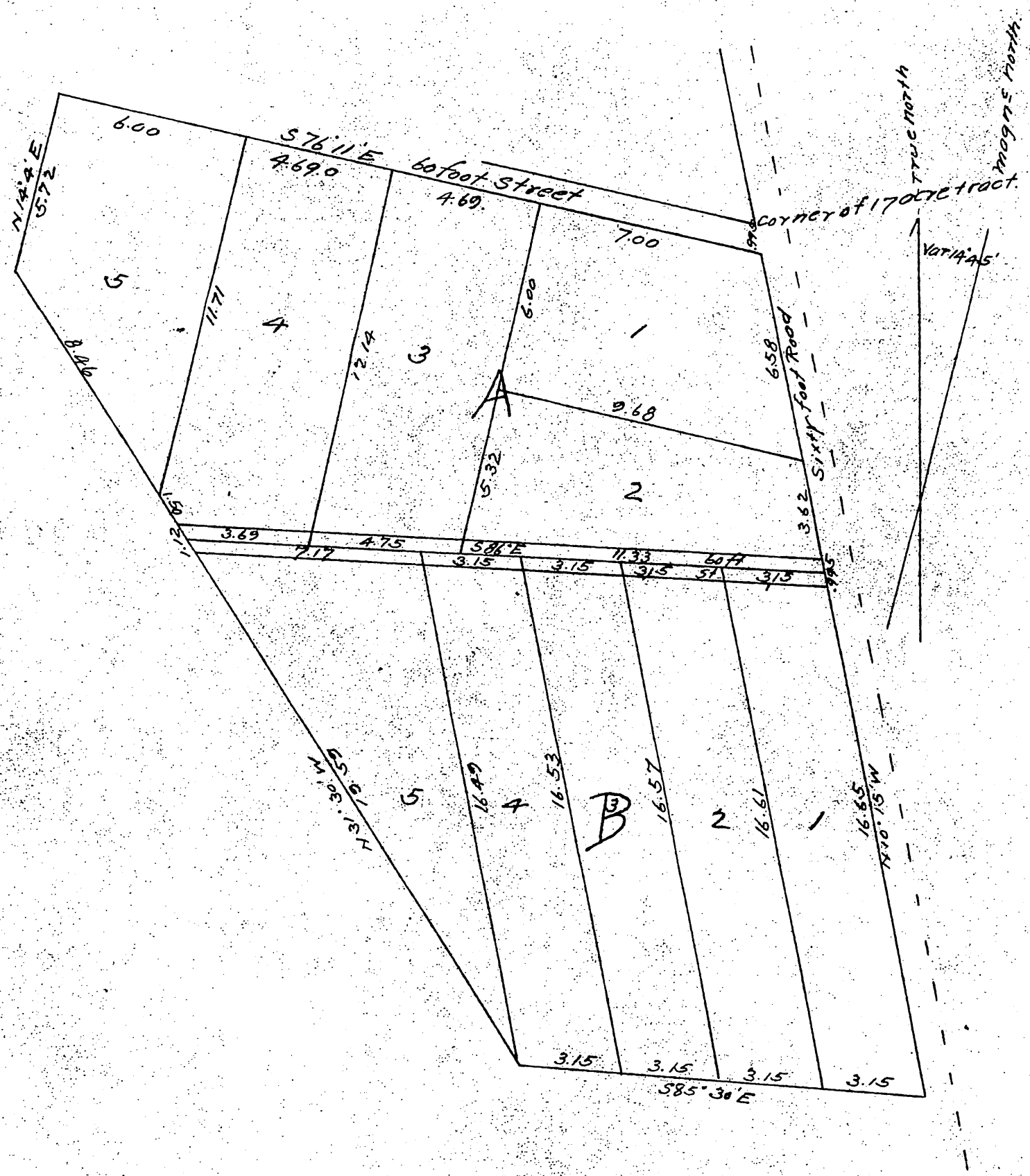


MAP OF J. T. Morgan's

Resurvey & Subdivision of a plot consisting of two Lots numbered 14 and 15 on a map (recorded on page 395 book 5 of Miscellaneous Records of Los Angeles County) of a portion of the Hunter's Subdivision of a part of the Rancho San Raphael in the said County of Los Angeles, State of California.

Surveyed by H. Kerr May 1888

True Courses Distances in chains and decimals.
Scale 4 chains to 1 inch.



A full, true and correct copy of the original
recorded May 16, 1888 at 40 min past 1 P.M.
at request of J. T. Morgan
Frank A. Gibson County Recorder
By George Rugbee Deputy